

GETRÄNKELEITUNGS- ARMATUREN



138



Rohre

139-149



Rohrverbindungen

150-153



Reduzierstücke

154-157



Bogen

158-162



T-Stücke
Kreuzstücke

163-169



Scheibventile
und Zubehör

170-175



Rohrsiebe
Hähne
Ventile
Schaugläser

176-177

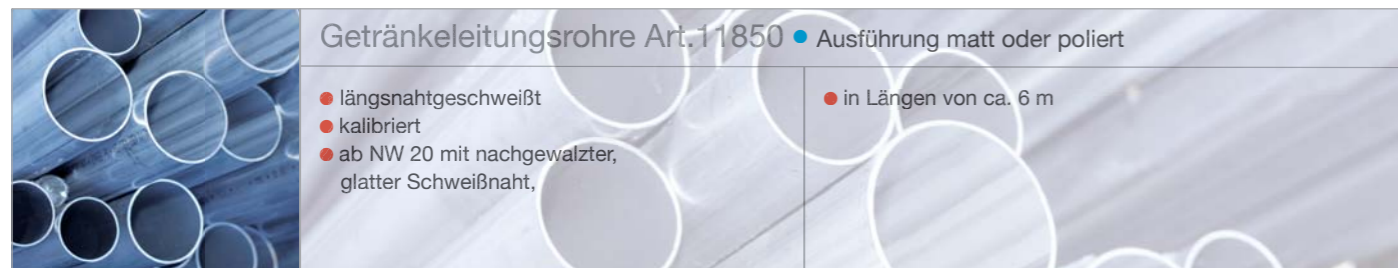


Tankrüstung

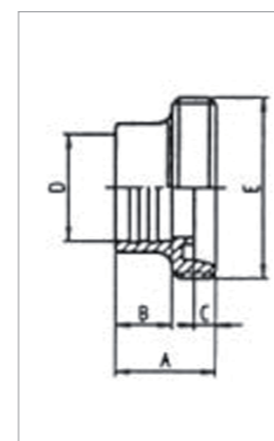
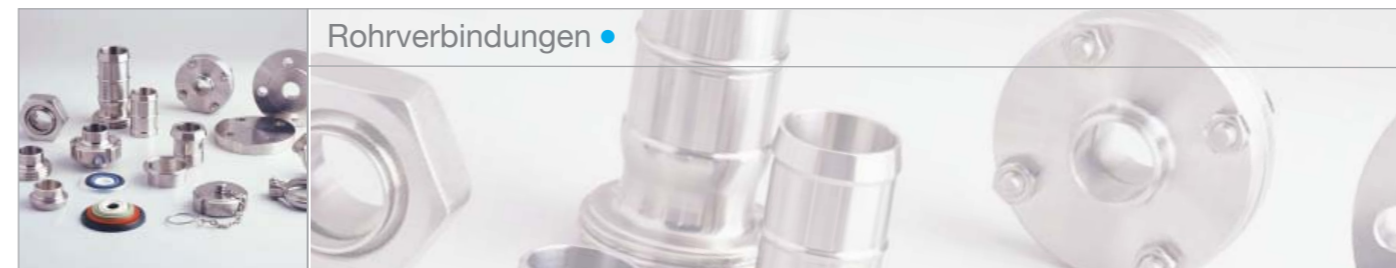
178-181



Montagezubehör
Werkzeug

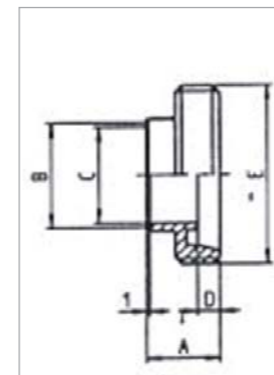


Nennweite	Masse / mm	Gewicht kg/m	Preis/€ per lfm
DN 10	12 x 1,5	0,394	-
DN 15	18 x 1,5	0,620	-
DN 20	22 x 1,5	0,770	-
DN 25	28 x 1,5	0,995	-
DN 32	34 x 1,5	1,221	-
DN 40	40 x 1,5	1,446	-
DN 50	52 x 1,5	1,897	-
DN 65	70 x 2,0	3,405	-
DN 80	85 x 2,0	4,157	-
DN 100	104 x 2,0	5,108	-
DN 125	129 x 2,0	6,360	-
DN 150	154 x 2,0	7,612	-
DN 200	204 x 2,0	10,116	-
DN 250	254 x 2,0	12,620	-



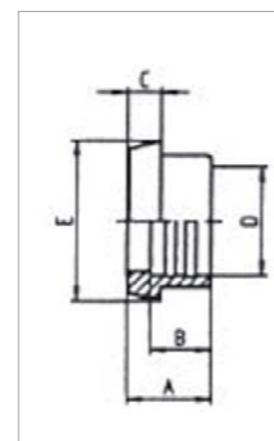
Gewindestutzen DIN-WALZ, Art. 205 • Wst. 1.4301, poliert

205	A	B	C	D	E (Rd. Gew.)	G(kg)	€/Stk
DN 10	21	12	4	12,2	28x1/8"	0,04	-
DN 15	21	12	4	18,2	34x1/8"	0,05	-
DN 20	24	12	6	22,2	44x1/6"	0,10	-
DN 25	29	15	7	28,2	52x1/6"	0,13	-
DN 32	32	18	7	34,2	58x1/6"	0,16	-
DN 40	33	20	7	40,2	65x1/6"	0,21	-
DN 50	35	22	7	52,2	78x1/6"	0,30	-
DN 65	40	25	8	70,3	95x1/6"	0,45	-
DN 80	45	28	8	85,3	110x1/4"	0,60	-
DN100	54	35	10	104,3	130x1/4"	0,78	-
DN125	46	10	12	129,4	160x1/4"	1,12	-
DN150	50	12	13	154,4	190x1/4"	1,91	-



Gewindestutzen DIN-Anschweiß kurz, Art. 205K • Wst. 1.4301, poliert

205K	A	B	C	D	E (Rd. Gew.)	G(kg)	€/Stk
DN 10	18	12,2	9	4	28x1/8"	0,04	-
DN 15	18	18,2	15	4	34x1/8"	0,05	-
DN 20	20	22,2	19	5	44x1/6"	0,08	-
DN 25	23	28,2	26	6	52 x1/6"	0,11	-
DN 32	23	34,2	32	6	58 x1/6"	0,13	-
DN 40	23	40,2	38	6	65 x1/6"	0,15	-
DN 50	24	52,2	50	7	78 x1/6"	0,19	-
DN 65	26	70,3	66	8	95 x1/6"	0,28	-
DN 80	26	85,3	81	8	110x1/4"	0,42	-
DN100	31	104,3	100	10	130x1/4"	0,57	-

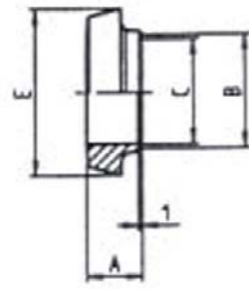


Kegelstutzen DIN-WALZ, Art. 206 • Wst. 1.4301, poliert

206	A	B	C	D	E	G(kg)	€/Stk
DN 10	17	12	6	12,2	22	0,02	-
DN 15	17	12	6	18,2	28	0,03	-
DN 20	18	12	8	22,2	36	0,06	-
DN 25	22	15	10	28,2	44	0,09	-
DN 32	25	18	10	34,2	50	0,11	-
DN 40	26	20	10	40,2	56	0,14	-
DN 50	28	22	11	52,2	68	0,21	-
DN 65	32	25	12	70,3	86	0,32	-
DN 80	37	28	12	85,3	100	0,39	-
DN100	44	35	15	104,3	121	0,59	-
DN125	34	10	17	129,4	150	1,11	-
DN150	37	12	18	154,4	176	1,13	-

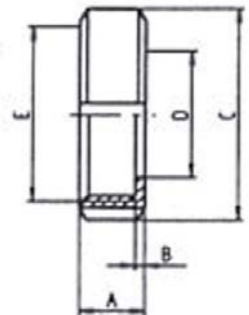


Alle Getränkeleitungsteile
auch in AISI 316 lieferbar



Kegelstutzen DIN-Anschweiß kurz, Art. 206K • Wst. 1.4301, poliert

206K	A	B	C	D	E	G(kg)	€/Stk
DN 10	14	12,2	9	6	22	0,02	-
DN 15	14	18,2	15	6	28	0,02	-
DN 20	14	22,2	19	8	36	0,04	-
DN 25	16	28,2	26	10	44	0,07	-
DN 32	16	34,2	32	10	50	0,09	-
DN 40	16	40,2	38	10	56	0,10	-
DN 50	17	52,2	50	11	68	0,12	-
DN 65	18	70,3	66	12	86	0,20	-
DN 80	18	85,3	81	12	100	0,24	-
DN100	21	104,3	100	15	121	0,39	-



Nutmutter DIN, Art. 210 • Wst. 1.4301, poliert

210	A	B	C	D	E (Rd. Gew.)	G(kg)	€/Stk
DN 10	18	3	38	19	28x1/8"	0,07	-
DN 15	18	3	44	25	34x1/8"	0,08	-
DN 20	20	3	54	31	44x1/6"	0,13	-
DN 25	21	3	63	36	52x1/6"	0,18	-
DN 32	21	3	70	42	58x1/6"	0,22	-
DN 40	21	3	78	49	65x1/6"	0,25	-
DN 50	22	3	92	62	78x1/6"	0,34	-
DN 65	25	4	112	80	95x1/6"	0,55	-
DN 80	29	4	127	94	110x1/4"	0,80	-
DN100	31	5	148	115	130x1/4"	1,08	-
DN125	35	5	178	138	160x1/4"	1,45	-
DN150	40	6	210	164	190x1/4"	1,88	-

Dichtring DIN-G, Art. 211P • Perbunan

211P	DN 10	DN 15	DN 20	DN 25	DN 32	DN 40	DN 50	DN 65	DN 80	DN100	DN125	DN150
EUR/Stk.	-	-	-	-	-	-	-	-	-	-	-	-

Dichtring DIN-G, Art. 211E • EPDM

211E	DN 10	DN 15	DN 20	DN 25	DN 32	DN 40	DN 50	DN 65	DN 80	DN100	DN125	DN150
EUR/Stk.	-	-	-	-	-	-	-	-	-	-	-	-

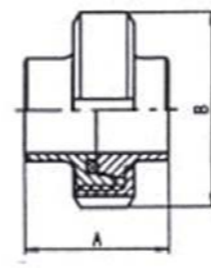
Dichtring DIN-G, Art. 211HP • hohe Ausführung, Perbunan

211HP	DN 10	DN 15	DN 20	DN 25	DN 32	DN 40	DN 50	DN 65	DN 80	DN100	DN125	DN150
EUR/Stk.	-	-	-	-	-	-	-	-	-	-	-	-

Dichtring DIN-G, Art. 211HE • hohe Ausführung, EPDM

211HE	DN 10	DN 15	DN 20	DN 25	DN 32	DN 40	DN 50	DN 65	DN 80	DN100	DN125	DN150
EUR/Stk.	-	-	-	-	-	-	-	-	-	-	-	-

Auch im Lieferprogramm:
Dichtringe aus PTFE oder Viton

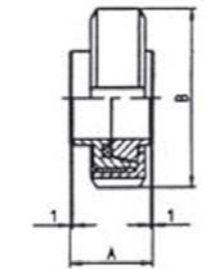


Rohrverschraubung DIN-Anschweiß, Art. 212A • Wst. 1.4301, poliert

212A	A	B	C	D	E	G(kg)	€/Stk
DN 10	34	38				0,13	-
DN 15	34	44				0,16	-
DN 20	36	54				0,28	-
DN 25	44	63				0,39	-
DN 32	50	70				0,47	-
DN 40	52	78				0,55	-
DN 50	56	92				0,77	-
DN 65	64	112				1,24	-
DN 80	74	127				1,73	-
DN100	88	148				2,40	-
DN125	68	178				3,27	-
DN150	74	210				4,63	-

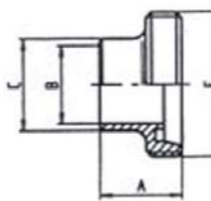
Rohrverschraubung DIN-WALZ, Art. 212W • Wst. 1.4301, poliert

212W	DN 10	DN 15	DN 20	DN 25	DN 32	DN 40	DN 50	DN 65	DN 80	DN100	DN125	DN150
EUR/Stk.	14,60	17,40	18,50	18,60	21,20	21,70	25,10	38,00	59,40	85,50	171,40	323,70



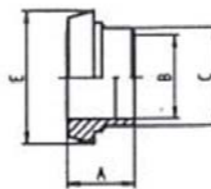
Rohrverschraubung DIN-Anschweiß kurz, Art. 212K • Wst. 1.4301, poliert

212K	A	B	C	D	E	G(kg)	€/Stk
DN 10	28	38				0,13	-
DN 15	28	44				0,15	-
DN 20	28	54				0,25	-
DN 25	32	63				0,36	-
DN 32	32	70				0,44	-
DN 40	32	78				0,50	-
DN 50	34	92				0,68	-
DN 65	36	112				1,03	-
DN 80	36	127				1,46	-
DN100	42	148				2,04	-



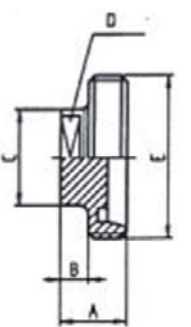
Gewindestutzen DIN-Anschweiß, Art. 213 • Wst. 1.4301, poliert

213	A	B	C	D	E (Rd. Gew.)	G(kg)	€/Stk
DN 10	21	10	15		28 x1/8"	0,04	-
DN 15	21	16	21		34 x1/8"	0,05	-
DN 20	24	20	25		44 x1/6"	0,09	-
DN 25	29	26	31		52 x1/6"	0,12	-
DN 32	32	32	37		58 x1/6"	0,14	-
DN 40	33	38	43		65 x1/6"	0,17	-
DN 50	35	50	55		78 x1/6"	0,24	-
DN 65	40	66	72		95 x1/6"	0,38	-
DN 80	45	81	87		110 x1/4"	0,55	-
DN100	54	100	106		130 x1/4"	0,71	-
DN125	46	125	132		160 x1/4"	1,02	-
DN150	50	150	157		190x1/4"	1,71	-



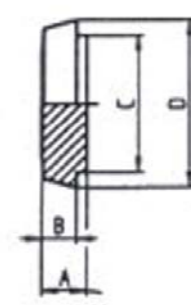
Kegelstutzen DIN-Anschweiß, Art. 214 • Wst. 1.4301, poliert

214	A	B	C	D	E	G(kg)	€/Stk
DN 10	17	10	15		22	0,02	-
DN 15	17	16	21		28	0,03	-
DN 20	18	20	35		36	0,06	-
DN 25	22	26	31		44	0,09	-
DN 32	25	32	37		50	0,11	-
DN 40	26	38	43		56	0,13	-
DN 50	28	50	55		68	0,19	-
DN 65	32	66	72		86	0,31	-
DN 80	37	81	87		100	0,38	-
DN100	44	100	106		121	0,61	-
DN125	34	125	132		150	0,80	-
DN150	37	150	157		176	1,04	-


Gewindestutzen-Blind, Art. 217 • Wst. 1.4301, poliert

217	A	B	C	D	E (Rd. Gew.)	G(kg)	€/Stk
DN 10	22	10	22	19	28x1/8"	0,06	-
DN 15	22	10	25	22	34 x1/8"	0,09	-
DN 20	24	10	25	22	44 x1/6"	0,13	-
DN 25	24	10	34	27	52 x1/6"	0,19	-
DN 32	24	10	34	27	58 x1/6"	0,22	-
DN 40	24	10	34	27	65 x1/6"	0,25	-
DN 50	24	10	34	27	78 x1/6"	0,35	-
DN 65	26	10	34	27	95 x1/6"	0,64	-
DN 80	30	10	34	27	110 x1/4"	1,30	-
DN100	30	10	34	27	130 x1/4"	2,10	-



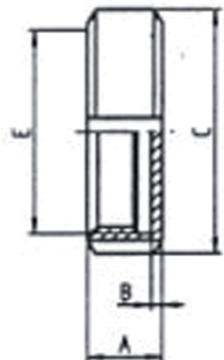
Kegelstutzen-Blind, Art. 218 • Wst. 1.4301, poliert

218	A	B	C	D	E	G(kg)	€/Stk
DN 10	9	6	18	22		0,02	-
DN 15	9	6	24	28		0,04	-
DN 20	11	8	30	36		0,07	-
DN 25	13	10	35	44		0,13	-
DN 32	13	10	41	50		0,17	-
DN 40	13	10	48	56		0,22	-
DN 50	14	11	61	68		0,35	-
DN 65	16	12	79	86		0,67	-
DN 80	16	12	93	100		0,92	-
DN100	20	15	114	121		1,34	-
DN125	22	17	137	150		1,68	-
DN150	24	18	163	176		4,30	-



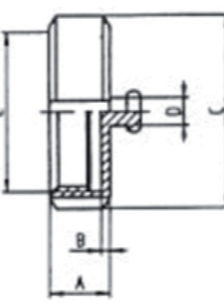
Kegelstutzen Blind-Blech, Art. 218A • Wst. 1.4301, poliert

218A	A	B	C	D	E	G(kg)	€/Stk
DN 25	10	47	1,5			0,03	-
DN 32	10	53	1,5			0,04	-
DN 40	10	61	1,5			0,05	-
DN 50	11	73	1,5			0,06	-
DN 65	12	90	1,5			0,10	-
DN 80	12	103	1,5			0,12	-
DN100	15	123	1,5			0,17	-

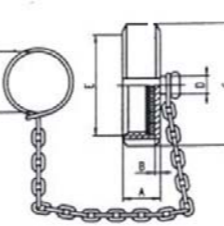
Blindmutter-DIN, Art. 220 • Wst. 1.4301, poliert

220	A	B	C	D	E (Rd. Gew.)	G(kg)	€/Stk
DN 10	18	3	38		28 x1/8"	0,08	-
DN 15	18	3	44		34 x1/8"	0,10	-
DN 20	20	3	54		44 x1/6"	0,14	-
DN 25	21	3	63		52 x1/6"	0,19	-
DN 32	21	3	70		58 x1/6"	0,23	-
DN 40	21	3	78		65 x1/6"	0,26	-
DN 50	22	3	92		78 x1/6"	0,38	-
DN 65	25	4	112		95 x1/6"	0,66	-
DN 80	30	4	127		110 x1/4"	1,00	-
DN100	31	5	148		130 x1/4"	1,40	-
DN125	34	5	178		160 x1/4"	1,97	-
DN150	39	6	210		190 x1/4"	2,87	-



Blindmutter-DIN mit Kettenknopf, Art. 221 • Wst. 1.4301, poliert

221	A	B	C	D	E (Rd. Gew.)	G(kg)	€/Stk
DN 10	18	3	38	10	28 x1/8"	0,09	-
DN 15	18	3	44	10	34 x1/8"	0,11	-
DN 20	20	3	54	10	44 x1/6"	0,15	-
DN 25	21	3	63	10	52 x1/6"	0,20	-
DN 32	21	3	70	10	58 x1/6"	0,24	-
DN 40	21	3	78	10	65 x1/6"	0,27	-
DN 50	22	3	92	10	78 x1/6"	0,39	-
DN 65	25	4	112	10	95 x1/6"	0,67	-
DN 80	30	4	127	10	110 x1/4"	1,01	-
DN100	31	5	148	10	130 x1/4"	1,41	-
DN125	34	5	178	10	160 x1/4"	1,98	-
DN150	39	6	210	10	190x1/4"	2,88	-



Blindmutter-DIN komplett, Art. 221K • Wst. 1.4301, poliert

221K	A	B	C	D	E (Rd. Gew.)	G(kg)	€/Stk
DN 10	18	3	38	10	28 x1/8"	0,12	-
DN 15	18	3	44	10	34 x1/8"	0,15	-
DN 20	20	3	54	10	44 x1/6"	0,19	-
DN 25	21	3	63	10	52 x1/6"	0,25	-
DN 32	21	3	70	10	58 x1/6"	0,29	-
DN 40	21	3	78	10	65 x1/6"	0,33	-
DN 50	22	3	92	10	78 x1/6"	0,46	-
DN 65	25	4	112	10	95 x1/6"	0,85	-
DN 80	30	4	127	10	110 x1/4"	1,11	-
DN100	31	5	148	10	130 x1/4"	1,53	-
DN125	34	5	178	10	160 x1/4"	2,12	-

Dichtscheibe für Blindmutter, Art. 222P • Perbunan

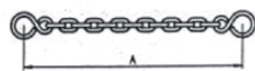
222P	DN 10	DN 15	DN 20	DN 25	DN 32	DN 40	DN 50	DN 65	DN 80	DN100	DN125	DN150
EUR/Stk.	-	-	-	-	-	-	-	-	-	-	-	-

Dichtscheibe für Blindmutter, Art. 222E • EPDM

222E	DN 10	DN 15	DN 20	DN 25	DN 32	DN 40	DN 50	DN 65	DN 80	DN100	DN125	DN150
EUR/Stk.	-	-	-	-	-	-	-	-	-	-	-	-

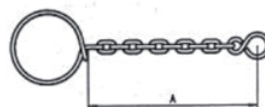


Kette mit 2 S-Haken, Art. 223A • Wst. 1.4301



223A	A	G(kg)	€/Stk
DN 10	160	0,01	-
DN 15	190	0,02	-
DN 20	230	0,02	-
DN 25	240	0,02	-
DN 32	260	0,02	-
DN 40	300	0,02	-
DN 50	350	0,03	-
DN 65	400	0,03	-
DN 80	460	0,03	-
DN100	550	0,03	-
DN125	650	0,04	-
DN150	750	0,04	-

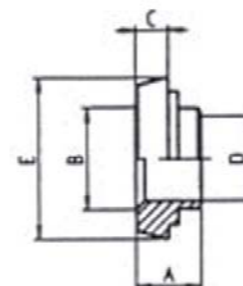
Kette mit Oese und S-Haken, Art. 223B • Wst. 1.4301



223B	A	G(kg)	€/Stk
DN 10	90	0,03	-
DN 15	90	0,03	-
DN 20	90	0,03	-
DN 25	90	0,03	-
DN 32	100	0,03	-
DN 40	110	0,03	-
DN 50	130	0,04	-
DN 65	140	0,04	-
DN 80	140	0,05	-
DN100	170	0,06	-
DN125	200	0,07	-
DN150	230	0,08	-

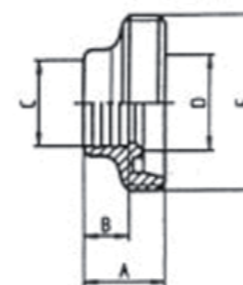


Kegelstutzen DIN-Anschweiß-red., Art. 224A • Wst. 1.4301 poliert



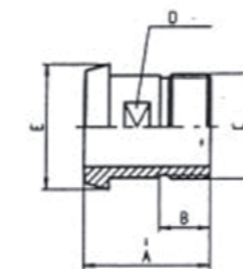
224A	A	B	C	D	E	G(kg)	€/Stk
25/15	22	26	10	16	44	0,11	-
32/15	23	32	10	16	50	0,14	-
32/20	23	32	10	20	50	0,14	-
32/25	20	32	10	26	50	0,12	-
40/15	25	38	10	16	56	0,20	-
40/20	25	38	10	20	56	0,21	-
40/25	20	38	10	26	56	0,17	-
40/32	23	38	10	32	56	0,17	-
50/25	28	50	11	26	68	0,31	-
50/32	23	50	11	32	68	0,29	-
50/40	26	50	11	38	68	0,27	-
65/25	32	66	12	26	68	0,51	-
65/32	32	66	12	32	68	0,52	-
65/40	26	66	12	38	68	0,54	-
65/50	27	66	12	50	68	0,45	-
80/40	36	81	12	38	100	0,75	-
80/50	30	81	12	50	100	0,66	-
80/65	31	81	12	66	100	0,50	-
100/50	40	100	15	50	121	1,20	-
100/65	40	100	15	66	121	1,17	-
100/80	42	100	15	81	121	1,06	-
125/100	56	125	17	100	150	1,35	-
150/100	50	150	18	100	176	1,65	-

Gewindestutzen DIN-Walz-red., Art. 226 • Wst. 1.4301 poliert



226	A	B	C	D	E (Rd. Gew.)	G(kg)	€/Stk
32/25	27	15	28,2	32	58x1/6	0,16	-
40/25	28	15	28,2	38	65 x1/6	0,22	-
40/32	29	18	34,2	38	65 x1/6	0,21	-
50/25	26	15	28,2	50	78 x1/6	0,32	-
50/32	29	18	34,2	50	78 x1/6	0,33	-
50/40	35	20	40,2	50	78 x1/6	0,33	-
65/32	39	18	34,2	66	95 x1/6	0,49	-
65/40	39	20	40,2	66	95 x1/6	0,50	-
65/50	40	22	52,2	66	95 x1/6	0,71	-
80/40	43	20	40,2	81	110 x1/4	0,98	-
80/50	45	22	52,2	81	110 x1/4	0,92	-
80/65	46	25	70,3	81	110 x1/4	0,58	-
100/50	49	22	52,2	100	130 x1/4	1,20	-
100/65	49	25	70,3	100	130 x1/4	1,11	-
100/80	49	28	85,3	100	130 x1/4	0,93	-

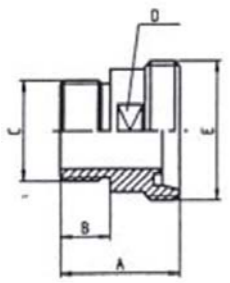
Kegeleinschraubstutzen-DIN, Art. 227 • Wst. 1.4301, poliert



227	A	B	C	D SW	E	G(kg)	€/Stk
DN 10	38	14	R3/8"	14	22	0,03	-
DN 15	38	14	R1/2"	19	28	0,05	-
DN 20	40	14	R3/4"	27	36	0,09	-
DN 25	50	20	R1"	30	44	0,14	-
DN 32	50	20	R1 1/4"	36	50	0,24	-
DN 40	50	20	R1 1/2"	44	56	0,27	-
DN 50	50	20	R2"	55	68	0,35	-
DN 65	55	22	R2 1/2"	70	86	0,53	-
DN 80	60	25	R3"	88	100	0,67	-
DN100	70	30	R4"	110	121	1,22	-

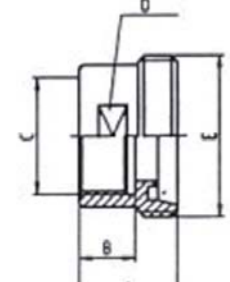


Gewindeeinschraubstutzen DIN, Art. 228 • Wst. 1.4301, poliert



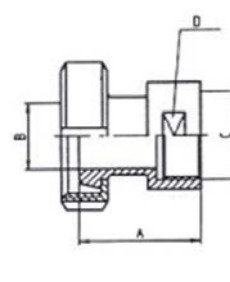
228	A	B	C	D SW	E	G(kg)	€/Stk
DN 10	40	14	R3/8"	17	28 x1/8"	0,06	-
DN 15	40	14	R1/2"	24	34 x1/8"	0,08	-
DN 20	42	14	R3/4"	30	44 x1/6"	0,14	-
DN 25	48	20	R1"	41	52 x1/6"	0,28	-
DN 32	48	20	R1 1/4"	46	58 x1/6"	0,35	-
DN 40	50	20	R1 1/2"	50	65 x1/6"	0,40	-
DN 50	52	20	R2"	65	78 x1/6"	0,53	-
DN 65	56	22	R2 1/2"	80	95 x1/6"	0,72	-
DN 80	66	25	R3"	95	110 x1/4"	1,01	-
DN100	72	30	R4"	117	130 x1/4"	1,54	-

Gewindeaufschraubstutzen DIN, Art. 229 • Wst. 1.4301, poliert



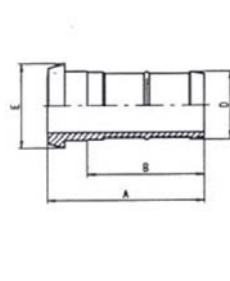
229	A	B	C	D SW	E	G(kg)	€/Stk
DN 10	30	14	R3/8"	19	28 x1/8"	0,06	-
DN 15	30	14	R1/2"	24	34 x1/8"	0,07	-
DN 20	30	14	R3/4"	30	44 x1/6"	0,11	-
DN 25	35	20	R1"	41	52 x1/6"	0,22	-
DN 32	35	20	R1 1/4"	46	58 x1/6"	0,23	-
DN 40	35	20	R1 1/2"	50	65 x1/6"	0,24	-
DN 50	35	20	R2"	65	78 x1/6"	0,37	-
DN 65	38	22	R2 1/2"	80	95 x1/6"	0,54	-
DN 80	43	25	R3"	95	110 x1/4"	0,72	-
DN100	50	30	R4"	117	130 x1/4"	0,91	-

Kegelaufschraubstutzen DIN, Art. 230 • Wst. 1.4301, poliert



230	A	B	C	D SW	E	G(kg)	€/Stk
DN 10	39	10	R3/8"	19	0,15	-	-
DN 15	41	16	R1/2"	24	0,20	-	-
DN 20	42	20	R3/4"	30	0,29	-	-
DN 25	52	26	R1"	41	0,54	-	-
DN 32	55	32	R1 1/4"	46	0,56	-	-
DN 40	56	38	R1 1/2"	50	0,59	-	-
DN 50	58	50	R2"	65	0,86	-	-
DN 65	64	66	R2 1/2"	80	1,36	-	-
DN 80	74	81	R3"	95	1,61	-	-
DN100	89	100	R4"	117	2,34	-	-

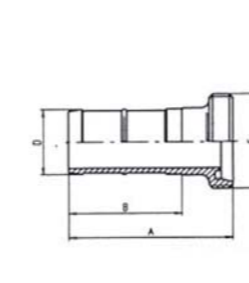
Schlauch-Kegelstutzen DIN, Art. 232 • Wst. 1.4301, poliert



232	A	B	Schlauch L. W	D	E	G(kg)	€/Stk
DN 10	50	31	13	15	22	0,04	-
DN 15	60	40	19	21	28	0,06	-
DN 20	70	54	25	27	36	0,13	-
DN 25	80	64	30	32	44	0,19	-
DN 32	90	67	38	40	50	0,27	-
DN 40	105	81	45	48	56	0,42	-
DN 50	120	95	55	58	68	0,58	-
DN 65	140	112	73	76	86	1,08	-
DN 80	160	127	87	90	100	1,32	-
DN100	180	146	107	110	121	2,13	-

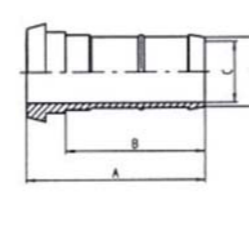


Schlauch-Gewindestutzen DIN, Art. 233 • Wst. 1.4301, poliert



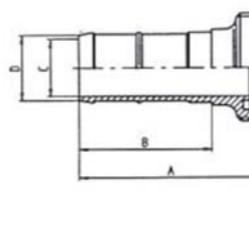
233	A	B	Schlauch L. W	D	E	G(kg)	€/Stk
DN 10	50	31	13	15	28 x1/8"	0,05	-
DN 15	64	47	19	21	34 x1/8"	0,08	-
DN 20	76	54	25	27	44 x1/6"	0,17	-
DN 25	87	64	30	32	52 x1/6"	0,23	-
DN 32	97	67	38	40	58 x1/6"	0,33	-
DN 40	112	81	45	48	65 x1/6"	0,52	-
DN 50	127	95	55	58	78 x1/6"	0,66	-
DN 65	148	112	73	76	95 x1/6"	1,14	-
DN 80	168	127	87	90	110 x1/4"	1,50	-
DN100	190	146	107	110	130 x1/4"	2,40	-

Schlauch-Kegelstutzen DIN-Bier, Art. 236 • Wst. 1.4301, poliert



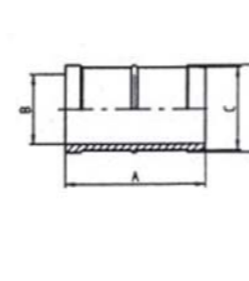
236	A	B	C	D	Schlauch L. W	G(kg)	€/Stk
DN 25	80	63	24	30	28	0,18	-
DN 32	90	70	31	38	35	0,30	-
DN 40	105	84	32	43	40	0,51	-
DN 50	120	97	45	53	50	0,56	-
DN 65	140	113	60	68	65	1,00	-
DN 80	164	132	74	83	80	1,30	-
DN100	180	141	93	103	100	2,05	-

Schlauch-Gewindestutzen DIN-Bier, Art. 237 • Wst. 1.4301, poliert



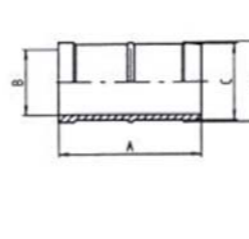
237	A	B	C	D	Schlauch L. W	G(kg)	€/Stk
DN 25	87	63	24	30	28	0,24	-
DN 32	97	70	31	38	35	0,33	-
DN 40	112	84	32	43	40	0,57	-
DN 50	127	97	45	53	50	0,65	-
DN 65	148	113	60	68	65	1,45	-
DN 80	172	132	74	83	80	1,50	-
DN100	190	141	93	103	100	2,15	-

Schlauchtülle DIN, Art. 238 • Wst. 1.4301, poliert



238	A	B	C	D	Schlauch L. W	G(kg)	€/Stk
DN 10	33	10	13	15	13	0,02	-
DN 15	43	16	19	21	19	0,03	-
DN 20	52	20	25	27	25	0,08	-
DN 25	58	26	30	32	30	0,09	-
DN 32	65	32	38	40	38	0,09	-
DN 40	79	38	45	48	45	0,26	-
DN 50	92	50	55	58	55	0,34	-
DN 65	108	66	73	76	73	0,66	-
DN 80	123	81	87	90	87	0,80	-
DN100	136	100	107	110	107	1,00	-

Schlauchtülle Bier, Art. 238A • Wst. 1.4301, poliert

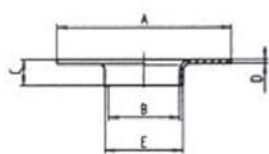


238A	A	B	C	D	Schlauch L. W	G(kg)	€/Stk
DN 25	58	24	28	30	28	0,09	-
DN 32	65	31	36	38	35	0,09	-
DN 40	79	32	40	43	40	0,26	-
DN 50	92	45	50	53	50	0,34	-
DN 65	108	60	65	68	65	0,66	-
DN 80	127	74	80	83	80	0,80	-
DN100	136	93	100	103	100	1,00	-

Alle Getränkeleitungsteile
auch in AISI 316 lieferbar

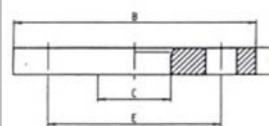


Bördel-ND10, Art. 242A • Wst. 1.4301



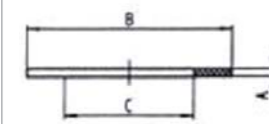
242A	A	B	C	D	E	G(kg)	€/Stk
DN 25	68	25	12	2	28	0,06	-
DN 32	78	32	12	2	35	0,07	-
DN 40	88	37	16	2	40	0,09	-
DN 50	102	49	17	2	52	0,12	-
DN 65	122	66	20	2,5	70	0,21	-
DN 80	140	81	20	2,5	85	0,27	-
DN100	160	100	22	2,5	104	0,33	-
DN125	192	125	24	2,5	129	0,45	-
DN150	212	150	30	2,5	154	0,54	-

Losflansch-ND10-DIN 2642, Art. 243 • Aluminium



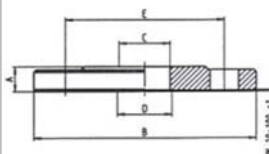
243	A	B	C	D	E	G(kg)	€/Stk
DN 25	16	115	33		85	0,37	-
DN 32	16	140	42		100	0,54	-
DN 40	16	150	50		110	0,59	-
DN 50	18	165	62		125	0,80	-
DN 65	18	185	81		145	0,90	-
DN 80	20	200	94		160	1,28	-
DN100	20	220	113		180	1,37	-
DN125	22	250	138		210	1,78	-
DN150	22	285	164		240	2,27	-

Dichtung für Bördel ND 10, Art. 243P • Perbunan



243P	A	B	C	D	E	G(kg)	€/Stk
DN 25	3	66	40				-
DN 32	3	76	48				-
DN 40	3	86	54				-
DN 50	3	100	68				-
DN 65	3	120	85				-
DN 80	3	136	100				-
DN100	3	156	120				-
DN125	3	186	145				-
DN150	3	210	170				-

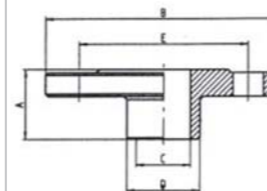
Flansch-ND10-kurz, Art. 244 • Wst. 1.4301 poliert



244	A	B	C	D	E	G(kg)	€/Stk
DN 10	14	90	10	12,2	60	0,54	-
DN 15	14	95	16	18,2	65	0,60	-
DN 20	16	105	20	22,2	75	0,90	-
DN 25	16	115	26	28,2	85	1,07	-
DN 32	16	140	32	34,2	100	1,27	-
DN 40	16	150	38	40,2	110	1,71	-
DN 50	18	165	50	52,2	125	2,35	-
DN 65	18	185	66	70,3	145	2,85	-
DN 80	20	200	81	85,3	160	3,40	-
DN100	20	220	100	104,3	180	4,03	-
DN125	22	250	125	129,5	210	6,35	-
DN150	22	285	150	154,5	240	7,95	-
DN200	24	340	200	205,0	295	10,45	-
DN250	26	395	250	255,0	350	16,10	-



Flansch ND10 mit Schweißende, Art. 247 • Wst. 1.4301, poliert



247	A	B	C	D	E	G(kg)	€/Stk
DN 10	35	90	10	15	60	0,51	-
DN 15	35	95	16	21	65	0,62	-
DN 20	38	105	20	25	75	0,62	-
DN 25	38	115	26	31	85	1,00	-
DN 32	40	140	32	37	100	1,51	-
DN 40	42	150	38	43	110	1,62	-
DN 50	45	165	50	55	125	2,14	-
DN 65	45	185	66	72	145	2,66	-
DN 80	50	200	81	87	160	3,17	-
DN100	52	220	100	106	180	4,04	-
DN125	55	250	125	133	210	6,45	-
DN150	55	285	150	159	240	8,10	-

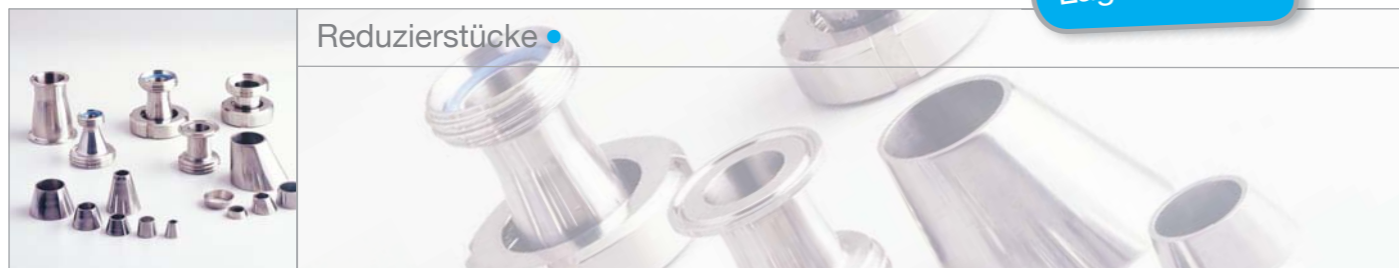


Senden Sie uns Ihre Anfrage oder
Bestellung gerne auch per Mail:
office@sonnleitnergmbh.at



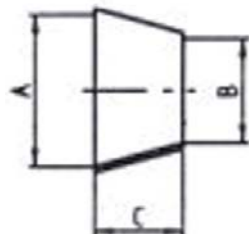


Großer
Lagerbestand!



Reduzierstücke

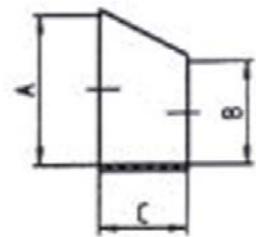
Reduzierstück DIN-SS, Art. 322 • Wst. 1.4301 poliert



322	A	B	C	D	E	G(kg)	€/Stk
15/10	16	10	10			0,01	-
20/10	20	10	18			0,01	-
20/15	20	16	7			0,01	-
25/10	26	10	28			0,02	-
25/15	26	16	18			0,02	-
32/15	26	20	11			0,01	-
32/20	32	20	22			0,02	-
32/25	32	26	11			0,02	-
40/15	38	16	40			0,04	-
40/20	38	20	33			0,04	-
40/25	38	26	22			0,03	-
40/32	38	32	11			0,04	-
50/25	50	26	44			0,08	-
50/32	50	32	33			0,08	-
50/40	50	38	22			0,09	-
65/25	66	26	73			0,13	-
65/32	66	32	62			0,12	-
65/40	66	38	51			0,11	-
65/50	66	50	29			0,09	-
80/25	81	26	100			0,20	-
80/32	81	32	89			0,18	-
80/40	81	38	78			0,16	-
80/50	81	50	56			0,12	-
80/65	81	66	27			0,11	-
100/50	100	50	90			0,29	-
100/65	100	66	61			0,28	-
100/80	100	81	34			0,17	-
125/65	125	66	106			0,44	-
125/80	125	81	79			0,41	-
125/100	125	100	45			0,55	-
150/80	150	81	124			0,50	-
150/100	150	100	90			0,45	-
150/125	150	125	45			0,40	-
200/150	200	150	90			0,79	-

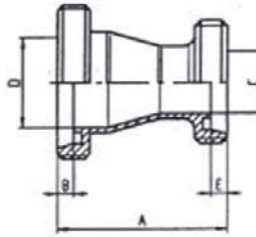
Reduzierstück DIN-SS, Art. 322M • Wst. 1.4301 matt

322M	15/10	20/10	20/15	25/10	25/15	25/20	32/20	32/25	40/15	40/20	40/25	40/32
EUR/Stk.	-	-	-	-	-	-	-	-	-	-	-	-
	50/25	50/32	50/40	65/25	65/32	65/40	65/50	80/25	80/32	80/40	80/50	80/65
EUR/Stk.	-	-	-	-	-	-	-	-	-	-	-	-
	100/50	100/65	100/80	125/65	125/80	125/100	150/80	150/100	150/125	200/150		
EUR/Stk.	-	-	-	-	-	-	-	-	-	-	-	-

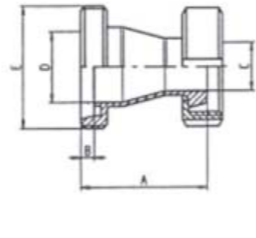
Reduzierstück DIN-SS-exz., Art. 322ex • Wst. 1.4301 poliert und matt

322ex	A	B	C	D	E	G(kg)	€/Stk
15/10	16	10	11			0,01	-
20/15	20	16	8			0,01	-
25/15	26	16	19			0,02	-
25/20	26	20	11			0,03	-
32/20	32	20	22			0,03	-
32/25	32	26	11			0,04	-
40/25	38	26	22			0,05	-
40/32	38	32	11			0,07	-
50/25	50	26	45			0,08	-
50/32	50	32	34			0,11	-
50/40	50	38	23			0,07	-
65/40	66	38	53			0,17	-
65/50	66	50	30			0,11	-
80/50	81	50	58			0,21	-
80/65	81	66	28			0,14	-
100/65	100	66	64			0,34	-
100/80	100	81	36			0,20	-
125/80	125	81	83			0,38	-
125/100	125	100	47			0,28	-
150/100	150	100	94			0,53	-
150/125	150	125	47			0,29	-



Reduzierstück DIN-GG, Art. 355 • Wst. 1.4301 poliert

355	A	B	C	D	E	G(kg)	€/Stk
32/25	62	7	26	32	7	0,29	-
40/25	73	7	26	38	7	0,32	-
40/32	65	7	32	38	7	0,37	-
50/32	88	7	32	50	7	0,45	-
50/40	78	7	38	50	7	0,51	-
65/40	109	8	38	66	7	0,62	-
65/50	89	8	50	66	7	0,70	-
80/50	116	8	50	81	7	0,87	-
80/65	92	8	66	81	8	1,07	-
100/65	131	10	66	100	8	1,39	-
100/80	109	10	81	100	8	1,45	-

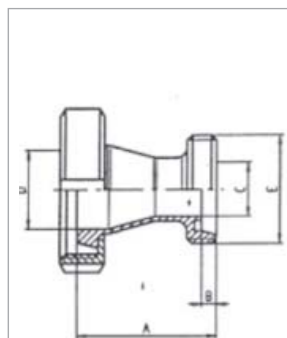


Reduzierstück DIN-GK, Art. 356 • Wst. 1.4301 poliert

356	A	B	C	D	E	G(kg)	€/Stk
32/25	55	7	26	32	58 x1/6"	0,35	-
40/25	66	7	26	38	65 x1/6"	0,45	-
40/32	58	7	32	38	65 x1/6"	0,50	-
50/32	81	7	32	50	78 x1/6"	0,57	-
50/40	71	7	38	50	78 x1/6"	0,64	-
65/40	102	8	38	66	95 x1/6"	0,73	-
65/50	82	8	50	66	95 x1/6"	0,87	-
80/50	109	8	50	81	110 x1/4"	1,05	-
80/65	84	8	66	81	110 x1/4"	1,35	-
100/65	123	10	66	100	130 x1/4"	1,43	-
100/80	101	10	81	100	130 x1/4"	1,10	-

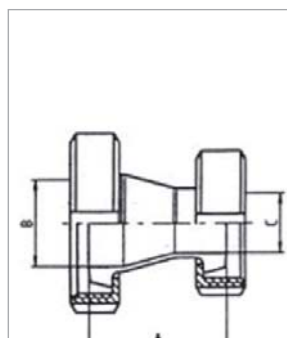


Clampverbindungen in DIN-, ISO
und Zollausführung auf Anfrage



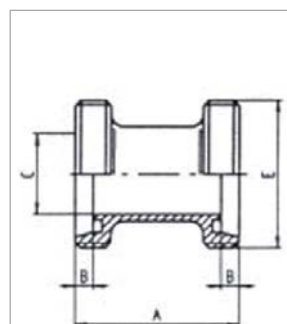
Reduzierstück DIN-KG, Art. 365 • Wst. 1.4301 poliert

365	A	B	C	D	E	G(kg)	€/Stk
32/25	55	7	26	32	52 x1/6"	0,43	-
40/25	66	7	26	38	52 x1/6"	0,50	-
40/32	58	7	32	38	58 x1/6"	0,51	-
50/32	81	7	32	50	58 x1/6"	0,65	-
50/40	71	7	38	50	65 x1/6"	0,85	-
65/40	101	7	38	65	65 x1/6"	1,00	-
65/50	81	7	50	65	78 x1/6"	10,5	-
80/50	108	7	50	80	78 x1/6"	1,15	-
80/65	84	8	66	80	95 x1/6"	1,50	-
100/65	121	8	66	100	95 x1/6"	1,92	-
100/80	99	8	81	100	110 x1/4"	1,95	-



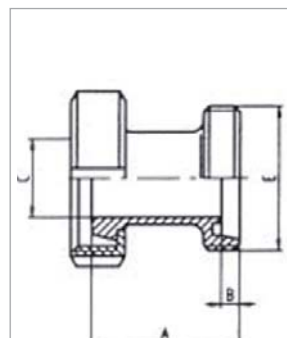
Reduzierstück DIN-KK, Art. 366 • Wst. 1.4301 poliert

366	A	B	C	D	E	G(kg)	€/Stk
32/25	48	32	26			0,45	-
40/25	59	38	26			0,67	-
40/32	51	38	32			0,72	-
50/32	74	50	32			0,97	-
50/40	64	50	38			1,03	-
65/40	94	66	38			1,50	-
65/50	74	66	50			1,34	-
80/50	101	81	50			1,65	-
80/65	76	81	66			1,97	-
100/65	113	100	66			2,00	-
100/80	91	100	81			2,42	-



Zwischenstück DIN-GG, Art. 370 • Wst. 1.4301 poliert und matt

370	A	B	C	D	E	G(kg)	€/Stk
DN 10	42	4	10		28 x1/8"	0,09	-
DN 15	42	4	16		34 x1/8"	0,11	-
DN 20	48	6	20		44 x1/6"	0,21	-
DN 25	58	7	26		52 x1/6"	0,28	-
DN 32	64	7	32		58 x1/6"	0,36	-
DN 40	66	7	38		65 x1/6"	0,46	-
DN 50	70	7	50		78 x1/6"	0,67	-
DN 65	80	8	66		95 x1/6"	1,06	-
DN 80	90	8	81		110 x1/4"	1,41	-
DN100	108	10	100		130 x1/4"	2,13	-

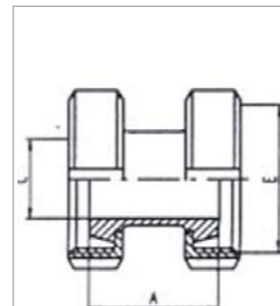


Zwischenstück DIN-GK, Art. 371 • Wst. 1.4301 poliert und matt

371	A	B	C	D	E	G(kg)	€/Stk
DN 10	38	4	10		28 x1/8"	0,13	-
DN 15	38	4	16		34 x1/8"	0,16	-
DN 20	42	6	20		44 x1/6"	0,28	-
DN 25	51	7	26		52 x1/6"	0,39	-
DN 32	57	7	32		58 x1/6"	0,47	-
DN 40	59	7	38		65 x1/6"	0,55	-
DN 50	63	7	50		78 x1/6"	0,77	-
DN 65	72	8	66		95 x1/6"	1,24	-
DN 80	82	8	81		110 x1/4"	1,73	-
DN100	98	10	100		130 x1/4"	2,40	-



Kompetente
persönliche Beratung!



Zwischenstück DIN-KK, Art. 372 • Wst. 1.4301 poliert und matt

372	A	B	C	D	E	G(kg)	€/Stk
DN 10	34		10		28 x1/8"	0,18	-
DN 15	34		16		34 x1/8"	0,22	-
DN 20	36		20		44 x1/6"	0,38	-
DN 25	44		26		52 x1/6"	0,54	-
DN 32	50		32		58 x1/6"	0,66	-
DN 40	52		38		65 x1/6"	0,76	-
DN 50	56		50		78 x1/6"	1,06	-
DN 65	64		66		95 x1/6"	1,72	-
DN 80	74		81		110 x1/4"	2,36	-
DN100	88		100		130 x1/4"	3,38	-



Andere
Ausführungen
auf Anfrage
erhältlich!

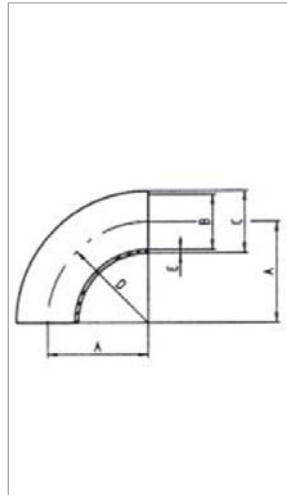




Bögen •

Bogen 90 Grad DIN-SS, Art. 422 • Wst. 1.4301 poliert

422	A	B	C	D	E	G(kg)	€/Stk
DN 10	26	9	12	26	1,5	0,01	-
DN 15	35	15	18	35	1,5	0,02	-
DN 20	40	19	22	40	1,5	0,04	-
DN 25	50	25	28	50	1,5	0,05	-
DN 32	55	31	34	55	1,5	0,08	-
DN 40	60	37	40	60	1,5	0,10	-
DN 50	70	49	52	70	1,5	0,17	-
DN 65	80	66	70	80	2,0	0,39	-
DN 80	90	81	85	90	2,0	0,57	-
DN100	100	100	104	100	2,0	1,17	-
DN125	187	125	129	187	2,0	1,90	-
DN150	225	150	154	225	2,0	2,72	-
DN200	300	200	204	300	2,0	4,75	-
DN250	375	250	254	375	2,0	7,50	-

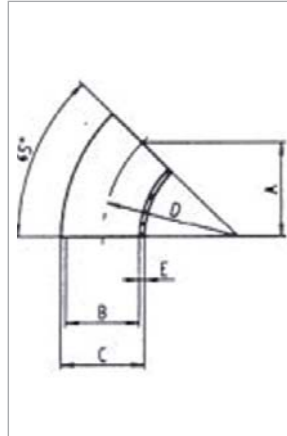


Bogen 90 Grad DIN-SS, Art. 422M • Wst. 1.4301 matt

422M	DN 10	DN 15	DN 20	DN 25	DN 32	DN 40	DN 50	DN 65	DN 80	DN100	DN125	DN150
EUR/Stk.	3,30	3,40	3,60	3,80	4,30	4,60	5,80	8,70	14,30	20,10	41,20	54,40

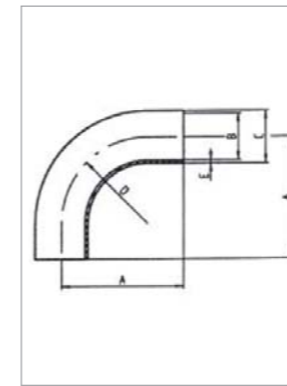
Bogen 45 Grad DIN-SS, Art. 422A • Wst. 1.4301 poliert

422A	A	B	C	D	E	G(kg)	€/Stk
DN 10	17	9	12	26	1,5	0,01	-
DN 15	23	15	18	35	1,5	0,01	-
DN 20	27	19	22	40	1,5	0,02	-
DN 25	34	25	28	50	1,5	0,03	-
DN 32	37	31	34	55	1,5	0,04	-
DN 40	41	37	40	60	1,5	0,05	-
DN 50	48	49	52	70	1,5	0,09	-
DN 65	55	66	70	80	2,0	0,19	-
DN 80	62	81	85	90	2,0	0,26	-
DN100	69	100	104	100	2,0	0,58	-
DN125	131	125	129	187	2,0	0,99	-
DN150	157	150	154	225	2,0	1,36	-



Bogen 45 Grad DIN-SS, Art. 422AM • Wst. 1.4301 matt

422AM	DN 10	DN 15	DN 20	DN 25	DN 32	DN 40	DN 50	DN 65	DN 80	DN100	DN125	DN150
EUR/Stk.	-	-	-	-	-	-	-	-	-	-	-	-

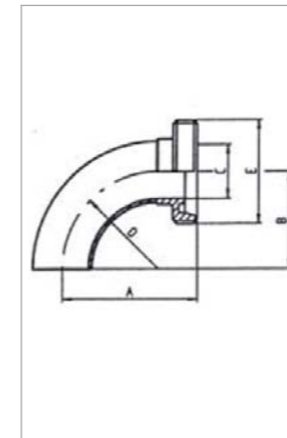


Bogen 90 Grad DIN-WW, Art. 433 • Wst. 1.4301 poliert

433	A	B	C	D	E	G(kg)	€/Stk
DN 10	38	9	12	26	1,5	0,01	-
DN 15	47	15	18	35	1,5	0,03	-
DN 20	52	19	22	40	1,5	0,05	-
DN 25	70	25	28	50	1,5	0,12	-
DN 32	78	31	34	55	1,5	0,17	-
DN 40	85	37	40	60	1,5	0,21	-
DN 50	97	49	52	70	1,5	0,26	-
DN 65	110	66	70	80	2,0	0,56	-
DN 80	118	81	85	90	2,0	0,79	-
DN100	140	100	104	100	2,0	1,65	-

Bogen 90 Grad DIN-WW, Art. 433M • Wst. 1.4301 matt

433M	DN 10	DN 15	DN 20	DN 25	DN 32	DN 40	DN 50	DN 65	DN 80	DN100	DN125	DN150
EUR/Stk.	6,90	9,00	9,70	7,25	8,90	9,80	12,20	18,20	50,90	65,40	-	-

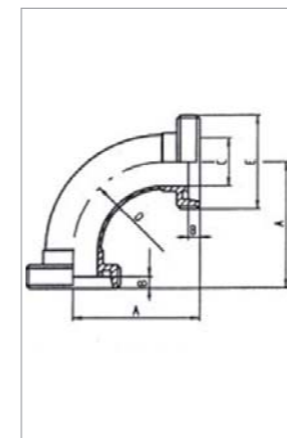


Bogen 90 Grad DIN-GS, Art. 452 • Wst. 1.4301 poliert

452	A	B	C	D	E	G(kg)	€/Stk
DN 10	43	26	9	26	28 x1/8"	0,04	-
DN 15	52	35	15	35	34 x1/8"	0,11	-
DN 20	59	40	19	40	44 x1/6"	0,13	-
DN 25	72	50	25	50	52 x1/6"	0,16	-
DN 32	77	55	31	55	58 x1/6"	0,21	-
DN 40	82	60	37	60	65 x1/6"	0,28	-
DN 50	93	70	49	70	78 x1/6"	0,37	-
DN 65	105	80	66	80	95 x1/6"	0,66	-
DN 80	115	90	81	90	110 x1/4"	0,99	-
DN100	130	100	100	100	130 x1/4"	1,68	-
DN125	223	187	125	187	160x1/4"	2,90	-
DN150	265	225	150	225	190x1/4"	4,28	-

Bogen 90 Grad DIN-GS, Art. 452M • Wst. 1.4301 matt

452M	DN 10	DN 15	DN 20	DN 25	DN 32	DN 40	DN 50	DN 65	DN 80	DN100	DN125	DN150
EUR/Stk.	19,30	22,60	24,40	25,00	26,20	27,60	29,10	39,50	63,90	91,60	215,30	301,50



Bogen 90 Grad DIN-GG, Art. 455 • Wst. 1.4301 poliert

455	A	B	C	D	E Rd.Gew.	G(kg)	€/Stk
DN 10	43	4	10	26	28 x1/8"	0,08	-
DN 15	52	4	16	35	34 x1/8"	0,12	-
DN 20	59	6	20	40	44 x1/6"	0,20	-
DN 25	72	7	26	50	52 x1/6"	0,25	-
DN 32	77	7	32	55	58 x1/6"	0,31	-
DN 40	82	7	38	60	65 x1/6"	0,40	-
DN 50	93	7	50	70	78 x1/6"	0,50	-
DN 65	105	8	66	80	95 x1/6"	0,90	-
DN 80	115	8	81	90	110 x1/4"	1,38	-
DN100	130	10	100	100	130 x1/4"	2,32	-
DN125	223	12	125	187	160x1/4"	3,82	-
DN150	265	13	150	225	190x1/4"	5,84	-

Bogen 90 Grad DIN-GG, Art. 455M • Wst. 1.4301 matt

455M	DN 10	DN 15	DN 20	DN 25	DN 32	DN 40	DN 50	DN 65	DN 80	DN100	DN125	DN150
EUR/Stk.	-	-	-	-	-	-	-	-	-	-	-	-



Bogen 90 Grad DIN-GK, Art. 456 • Wst. 1.4301 poliert

456	A	B	C	D	E	G(kg)	€/Stk
DN 10	43	39	10	26	28 x1/8"	0,16	-
DN 15	52	48	16	35	34 x1/8"	0,20	-
DN 20	59	53	20	40	44 x1/6"	0,28	-
DN 25	72	65	26	50	52 x1/6"	0,40	-
DN 32	77	70	32	55	58 x1/6"	0,48	-
DN 40	82	75	38	60	65 x1/6"	0,56	-
DN 50	93	86	50	70	78 x1/6"	0,77	-
DN 65	105	97	66	80	95 x1/6"	1,42	-
DN 80	115	107	81	90	110 x1/4"	1,95	-
DN100	130	120	100	100	130 x1/4"	2,67	-
DN125	223	211	125	187	160x1/4"	4,95	-
DN150	265	252	150	225	190x1/4"	7,25	-

Bogen 90 Grad DIN-GK, Art. 456M • Wst. 1.4301 matt

456M	DN 10	DN 15	DN 20	DN 25	DN 32	DN 40	DN 50	DN 65	DN 80	DN100	DN125	DN150
EUR/Stk.	-	-	-	-	-	-	-	-	-	-	-	-

Bogen 90 Grad DIN-KS, Art. 462 • Wst. 1.4301 poliert

462	A	B	C	D	E	G(kg)	€/Stk
DN 10	39	26	9	26		0,03	-
DN 15	48	35	15	35		0,07	-
DN 20	53	40	19	40		0,13	-
DN 25	65	50	25	50		0,13	-
DN 32	70	55	31	55		0,17	-
DN 40	75	60	37	60		0,22	-
DN 50	86	70	49	70		0,30	-
DN 65	97	80	66	80		0,56	-
DN 80	107	90	81	90		0,81	-
DN100	120	100	100	100		1,76	-
DN125	211	187	125	187		2,58	-
DN150	252	225	150	225		3,51	-

Bogen 90 Grad DIN-KS, Art. 462M • Wst. 1.4301 matt

462M	DN 10	DN 15	DN 20	DN 25	DN 32	DN 40	DN 50	DN 65	DN 80	DN100	DN125	DN150
EUR/Stk.	14,40	17,30	19,70	18,20	20,20	22,90	27,00	36,30	57,30	88,20	-	-

Bogen 90 Grad DIN-KK, Art. 466 • Wst. 1.4301 poliert

466	A	B	C	D	E	G(kg)	€/Stk
DN10	39		10	26		0,18	-
DN15	48		16	35		0,22	-
DN20	53		20	40		0,37	-
DN 25	65		36	50		0,54	-
DN 32	70		32	55		0,65	-
DN 40	75		38	60		0,76	-
DN 50	86		50	70		1,00	-
DN 65	97		66	80		1,84	-
DN 80	107		81	90		2,65	-
DN100	120		100	100		4,10	-
DN125	211		125	187		6,08	-
DN150	252		150	225		8,66	-

Bogen 90 Grad DIN-KK, Art. 466M • Wst. 1.4301 matt

466M	DN 10	DN 15	DN 20	DN 25	DN 32	DN 40	DN 50	DN 65	DN 80	DN100	DN125	DN150
EUR/Stk.	-	-	-	-	-	-	-	-	-	-	-	-



Bogen 180 Grad DIN-SS, Art. 486 • Wst. 1.4301 poliert

486	A	B	C	D	E	G(kg)	€/Stk
DN 10	52	9	12	26		0,01	-
DN 15	70	15	18	35		0,03	-
DN 20	80	19	22	40		0,06	-
DN 25	100	25	28	50		0,10	-
DN 32	110	31	34	55		0,16	-
DN 40	120	37	40	60		0,23	-
DN 50	140	49	52	70		0,24	-
DN 65	160	66	70	80		0,97	-
DN 80	180	81	85	90		1,13	-
DN100	200	100	104	100		2,34	-
DN125	375	125	129	187,5		3,80	-
DN150	450	150	154	225		5,44	-

Bogen 180 Grad DIN-SS, Art. 486M • Wst. 1.4301 matt

486M	DN 10	DN 15	DN 20	DN 25	DN 32	DN 40	DN 50	DN 65	DN 80	DN100	DN125	DN150
EUR/Stk.	-	-	-	-	-	-	-	-	-	-	-	-

Bogen 180 Grad DIN-KK, Art. 488 • Wst. 1.4301 poliert

488	A	B	C	D	E	G(kg)	€/Stk
DN 25	100	26	65			0,51	-
DN 32	110	32	70			0,76	-
DN 40	120	38	75			0,92	-
DN 50	140	50	86			1,15	-
DN 65	160	66	97			2,21	-
DN 80	180	81	107			3,16	-
DN100	200	100	120			5,27	-

Bogen 180 Grad DIN-KK, Art. 488M • Wst. 1.4301 matt

488M	DN 10	DN 15	DN 20	DN 25	DN 32	DN 40	DN 50	DN 65	DN 80	DN100	DN125	DN150
EUR/Stk.	-	-	-	-	-	-	-	-	-	-	-	-



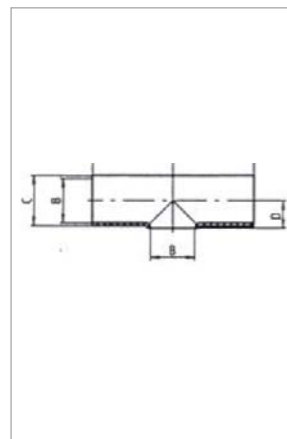


Getränkeleitungs-armaturen

T-Stücke / Kreuzstücke



T-Stücke / Kreuzstücke •

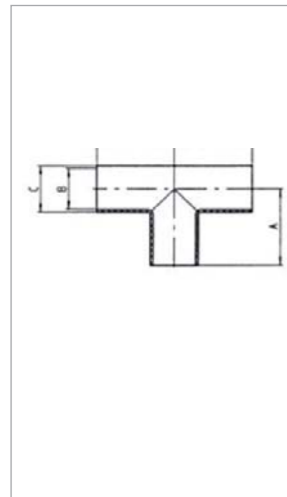


T-Stück DIN-SSS-kurz, Art. 5111 • Wst. 1.4301 poliert

5111	A	B	C	D	E	G(kg)	€/Stk
DN 20	40	19	22	12,5		0,07	-
DN 25	50	25	28	15,5		0,09	-
DN 32	55	31	34	19,0		0,12	-
DN 40	60	37	40	23,5		0,15	-
DN 50	70	49	52	31,0		0,24	-
DN 65	80	66	70	41,0		0,46	-
DN 80	90	81	85	48,5		0,68	-
DN100	100	100	104	58,0		0,92	-
DN125	187	125	129	74,0		1,97	-
DN150	225	150	154	90,0		2,89	-
DN200	300	200	204	115,0		5,46	-
DN250	375	250	254	140,0		8,43	-

T-Stück DIN-SSS-kurz, Art. 5111M • Wst. 1.4301 matt

5111M	DN 10	DN 15	DN 20	DN 25	DN 32	DN 40	DN 50	DN 65	DN 80	DN100	DN125	DN150
EUR/Stk.	-	-	8,60	7,90	9,50	9,30	10,60	13,90	17,80	24,10	67,90	95,20



T-Stück DIN-SSS, Art. 5222 • Wst. 1.4301 poliert

5222	A	B	C	D	E	G(kg)	€/Stk
DN 10	26	9	12			0,06	-
DN 15	35	15	18			0,08	-
DN 20	40	19	22			0,08	-
DN 25	50	25	28			0,10	-
DN 32	55	31	34			0,13	-
DN 40	60	37	40			0,21	-
DN 50	70	49	52			0,29	-
DN 65	80	66	70			0,62	-
DN 80	90	81	85			0,85	-
DN100	100	100	104			1,62	-
DN125	187	125	129			2,71	-
DN150	225	150	154			3,88	-
DN200	300	200	204			7,10	-
DN250	375	250	254			10,96	-

T-Stück DIN-SSS, Art. 5222M • Wst. 1.4301 matt

5222M	DN 10	DN 15	DN 20	DN 25	DN 32	DN 40	DN 50	DN 65	DN 80	DN100	DN125	DN150
EUR/Stk.	-	-	-	-	-	-	-	-	-	-	-	-

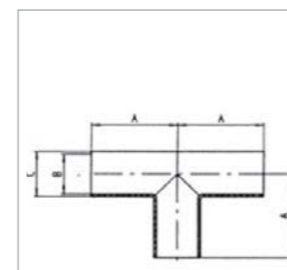


TIPP:
aktuelle **AKTIONEN** auf
www.sonnleitnergmbh.at



Getränkeleitungs-armaturen

T-Stücke / Kreuzstücke



T-Stück DIN-WWW, Art. 5333 • Wst. 1.4301 poliert

5333	A	B	C	D	E	G(kg)	€/Stk
DN 10	34	9	12			0,09	-
DN 15	43	15	18			0,11	-
DN 20	47	19	22			0,12	-
DN 25	58	25	28			0,14	-
DN 32	63	31	34			0,17	-
DN 40	69	37	40			0,24	-
DN 50	80	49	52			0,33	-
DN 65	90	66	70			0,69	-
DN 80	98	81	85			0,92	-
DN100	111	100	104			1,98	-

T-Stück DIN-WWW, Art. 5333M • Wst. 1.4301 matt

5333M	DN 10	DN 15	DN 20	DN 25	DN 32	DN 40	DN 50	DN 65	DN 80	DN100	DN125	DN150
EUR/Stk.	-	-	-	-	-	-	-	-	-	-	-	-



T-Stück DIN-SSS-kurz-red., Art. 5227 • Wst. 1.4301 poliert

5227	A	B	C	D	E	G(kg)	€/Stk
25/20	50	25	28	16	19	0,09	-
32/25	55	31	34	20,5	25	0,12	-
40/25	60	37	40	23,5	25	0,15	-
40/32	60	37	40	23	31	0,15	-
50/25	70	49	52	29	25	0,24	-
50/40	70	49	52	29	37	0,24	-
65/25	80	66	70	38	25	0,47	-
65/40	80	66	70	39,5	37	0,46	-
65/50	80	66	70	39	49	0,46	-
80/25	90	81	85	45,5	25	0,70	-
80/40	90	81	85	46,5	37	0,70	-
80/50	90	81	85	47	49	0,68	-
80/65	90	81	85	47	66	0,68	-
100/25	100	100	104	56	25	1,00	-
100/40	100	100	104	56	37	1,00	-
100/50	100	100	104	58	49	1,00	-
100/65	100	100	104	58	66	0,97	-
100/80	100	100	104	59	81	0,97	-
125/25	187	125	129	69,5	25	2,00	-
125/40	187	125	129	69,5	37	2,00	-
125/50	187	125	129	69,5	49	2,00	-
125/65	187	125	129	72,5	66	1,97	-
125/80	187	125	129	72,5	81	1,97	-
125/100	187	125	129	69,5	100	1,97	-
150/25	225	150	154	82	25	2,95	-
150/40	225	150	154	82	37	2,95	-
150/50	225	150	154	82	49	2,95	-
150/65	225	150	154	82	66	2,89	-
150/80	225	150	154	82	81	2,89	-
150/100	225	150	154	87	100	2,89	-
150/125	225	150	154	82	125	2,89	-

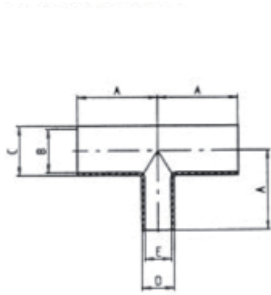
T-Stück DIN-SSS-kurz-red., Art. 5227M • Wst. 1.4301 matt

5227M	25/20	32/25	40/25	40/32	50/25	50/40	65/25	65/40	65/50	80/25	80/40	80/50
EUR/Stk.	-	-	-	-	-	-	-	-	-	-	-	-
EUR/Stk.	80/65	100/25	100/40	100/50	100/65	100/80	125/25	125/40	125/50	125/65	125/80	125/100
EUR/Stk.	150/25	150/40	150/50	150/65	150/80	150/100	150/125					
EUR/Stk.	-	-	-	-	-	-	-	-	-	-	-	-



T-Stück DIN-SSS-red., Art. 5228 • Wst. 1.4301 poliert

5228	A	B	C	D	E	G(kg)	€/Stk
25/20	50	25	28	22	19	0,12	-
32/25	55	31	34	28	25	0,15	-
40/25	60	37	40	28	25	0,18	-
40/32	60	37	40	34	31	0,20	-
50/25	70	49	52	28	25	0,27	-
50/40	70	49	52	40	37	0,31	-
65/25	80	66	70	28	25	0,50	-
65/40	80	66	70	40	37	0,51	-
65/50	80	66	70	52	49	0,60	-
80/25	90	81	85	28	25	0,73	-
80/40	90	81	85	40	37	0,74	-
80/50	90	81	85	52	49	0,76	-
80/65	90	81	85	70	66	0,84	-
100/25	100	100	104	28	25	1,02	-
100/40	100	100	104	40	37	1,06	-
100/50	100	100	104	52	49	1,08	-
100/65	100	100	104	70	66	1,17	-
100/80	100	100	104	85	81	1,24	-
125/25	187	125	129	28	25	2,02	-
125/40	187	125	129	40	37	2,04	-
125/50	187	125	129	52	49	2,07	-
125/65	187	125	129	70	66	2,08	-
125/80	187	125	129	85	81	2,17	-
125/100	187	125	129	104	100	2,22	-
150/25	225	150	154	28	25	2,98	-
150/40	225	150	154	40	37	2,99	-
150/50	225	150	154	52	49	3,02	-
150/65	225	150	154	70	66	3,03	-
150/80	225	150	154	85	81	3,09	-
150/100	225	150	154	104	100	3,18	-
150/125	225	150	154	129	125	3,39	-

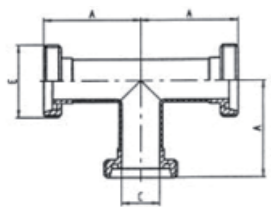


T-Stück DIN-SSS-red., Art. 5228M • Wst. 1.4301 matt

5228M	25/20	32/25	40/25	40/32	50/25	50/40	65/25	65/40	65/50	80/25	80/40	80/50
EUR/Stk.	-	-	-	-	-	-	-	-	-	-	-	-
EUR/Stk.	-	-	-	-	-	-	-	-	-	-	-	-
EUR/Stk.	-	-	-	-	-	-	-	-	-	-	-	-

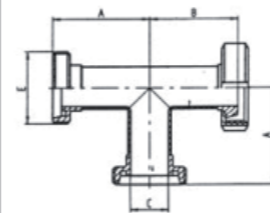
T-Stück DIN-GGG, Art. 5555 • Wst. 1.4301 poliert oder matt

5555	A	B	C	D	E Rd.Gew.	G(kg)	€/Stk
DN10	43		10		28x1/8"	0,15	-
DN15	52		16		34 x1/8"	0,20	-
DN20	59		20		44 x1/6"	0,30	-
DN 25	72		26		52 x1/6"	0,39	-
DN 32	77		32		58 x1/6"	0,45	-
DN 40	82		38		65 x1/6"	0,60	-
DN 50	93		50		78 x1/6"	0,76	-
DN 65	105		66		95 x1/6"	1,42	-
DN 80	115		81		110 x1/4"	2,07	-
DN100	130		100		130 x1/4"	3,34	-
DN125	223		125		160x1/4"	5,47	-
DN150	265		150		190x1/4"	8,56	-



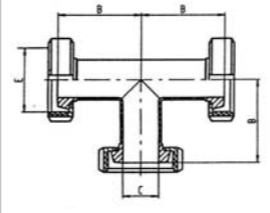
T-Stück DIN-GKG, Art. 5565 • Wst. 1.4301 poliert oder matt

5565	A	B	C	D	E Rd.Gew.	G(kg)	€/Stk
DN 10	43	39	10		28 x1/8"	0,20	-
DN 15	52	48	16		34 x1/8"	0,25	-
DN 20	59	53	20		44 x1/6"	0,39	-
DN 25	72	65	26		52 x1/6"	0,53	-
DN 32	77	70	32		58 x1/6"	0,63	-
DN 40	82	75	38		65 x1/6"	0,77	-
DN 50	93	86	50		78 x1/6"	1,03	-
DN 65	105	97	66		95 x1/6"	1,88	-
DN 80	115	107	81		110 x1/4"	2,70	-
DN100	130	120	100		130 x1/4"	4,02	-
DN125	223	211	125		160x1/4"	6,06	-
DN150	265	252	150		190x1/4"	9,97	-



T-Stück DIN-KKK, Art. 5666 • Wst. 1.4301 poliert oder matt

5666	A	B	C	D	E Rd.Gew.	G(kg)	€/Stk
DN 10		39	10		28 x1/8"	0,30	-
DN 15		48	16		34 x1/8"	0,35	-
DN 20		53	20		44 x1/6"	0,52	-
DN 25		65	26		52 x1/6"	0,83	-
DN 32		70	32		58 x1/6"	0,97	-
DN 40		75	38		65 x1/6"	1,15	-
DN 50		86	50		78 x1/6"	1,57	-
DN 65		97	66		95 x1/6"	2,81	-
DN 80		107	81		110 x1/4"	3,81	-
DN100		120	100		130 x1/4"	6,01	-
DN125		211	125		160x1/4"	8,86	-
DN150		252	150		190x1/4"	12,79	-



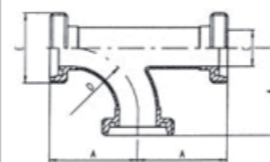
T-Bogen DIN-SSS, Art. 572 • Wst. 1.4301 poliert oder matt

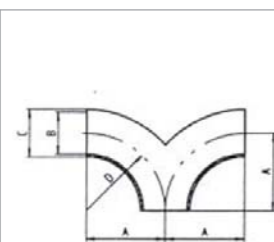
572	A	B	C	D	E	G(kg)	€/Stk
DN 25	45	25	28	50		0,10	-
DN 32	50	31	34	55		0,13	-
DN 40	55	37	40	60		0,21	-
DN 50	65	49	52	70		0,29	-
DN 65	75	66	70	80		0,62	-
DN 80	85	81	85	90		0,85	-
DN100	95	100	104	100		1,62	-
DN125	185	125	129	187		2,71	-
DN150	220	150	154	225		3,88	-



T-Bogen DIN-GGG, Art. 573 • Wst. 1.4301 poliert oder matt

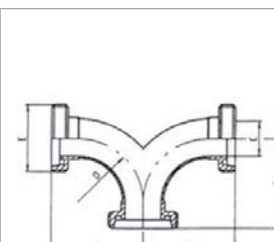
573	A	B	C	D	E	G(kg)	€/Stk
DN 25	67		26	50	52 x1/6"	0,39	-
DN 32	72		32	55	58 x1/6"	0,45	-
DN 40	77		38	60	65 x1/6"	0,60	-
DN 50	88		50	70	78 x1/6"	0,76	-
DN 65	100		66	80	95 x1/6"	1,42	-
DN 80	110		81	90	110 x1/4"	2,07	-
DN100	125		100	100	130 x1/4"	3,34	-
DN125	221		125	187	160 x1/4"	5,47	-
DN150	260		150	225	190 x1/4"	8,56	-





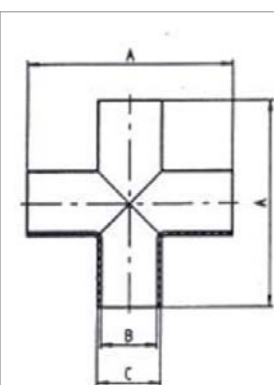
T-Bogen DIN-SSS, Art. 574 • Wst. 1.4301 poliert oder matt

574	A	B	C	D	E	G(kg)	€/Stk
DN 25	50	25	28	50		0,10	-
DN 32	55	31	34	55		0,13	-
DN 40	60	37	40	60		0,21	-
DN 50	70	49	52	70		0,29	-
DN 65	80	66	70	80		0,62	-
DN 80	90	81	85	90		0,85	-
DN100	100	100	104	100		1,62	-
DN125	187	125	129	187		2,71	-
DN150	225	150	154	225		3,88	-



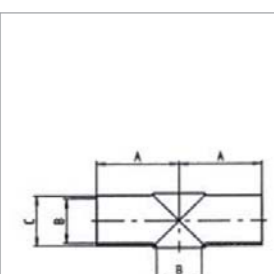
T-Bogen DIN-GGG, Art. 575 • Wst. 1.4301 poliert oder matt

575	A	B	C	D	E	G(kg)	€/Stk
DN 25	72		26	50	52 x1/6"	0,39	-
DN 32	77		32	55	58 x1/6"	0,45	-
DN 40	82		38	60	65 x1/6"	0,60	-
DN 50	93		50	70	78 x1/6"	0,76	-
DN 65	105		66	80	95 x1/6"	1,42	-
DN 80	115		81	90	110 x1/4"	2,07	-
DN100	130		100	100	130 x1/4"	3,34	-
DN125	223		125	187	160 x1/4"	5,47	-
DN150	265		150	225	190 x1/4"	8,56	-



Kreuzstück DIN-SSSS, Art. 576 • Wst. 1.4301 poliert oder matt

576	A	B	C	D	E	G(kg)	€/Stk
DN 25	100	25	28			0,11	-
DN 32	110	31	34			0,14	-
DN 40	120	37	40			0,27	-
DN 50	140	49	52			0,34	-
DN 65	160	66	70			0,78	-
DN 80	180	81	85			1,02	-
DN100	200	100	104			2,32	-
DN125	375	125	129			3,45	-
DN150	450	150	154			4,87	-
DN200	600	200	204			8,74	-
DN250	750	250	254			13,49	-



Kreuzstück DIN-SSSS kurz, Art. 577 • Wst. 1.4301 poliert oder matt

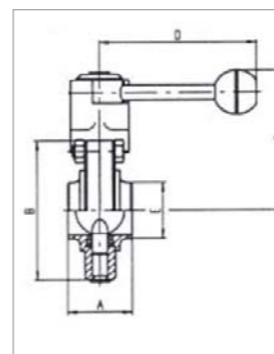
577	A	B	C	D	E	G(kg)	€/Stk
DN 25	50	25	28			0,09	-
DN 32	55	31	34			0,12	-
DN 40	60	37	40			0,15	-
DN 50	70	49	52			0,24	-
DN 65	80	66	70			0,46	-
DN 80	90	81	85			0,68	-
DN100	100	100	104			0,92	-
DN125	187	125	129			1,97	-
DN150	225	150	154			2,89	-
DN200	300	200	204			5,46	-
DN250	375	250	254			8,43	-



Senden Sie uns Ihre Anfrage oder
Bestellung einfach per Mail:
office@sonnleitnergmbh.at

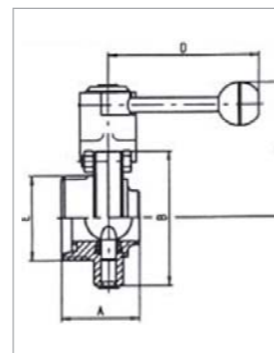


Scheibenventile •



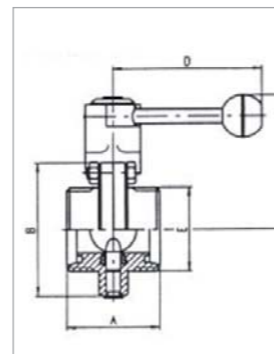
Scheibenventil DIN-SS, Art. 622 • Wst. 1.4301 poliert oder matt

622	A	B	C	D	E	G(kg)	€/Stk
DN 25	40	87	89	102	31	1,31	-
DN 32	42	92	91	102	37	1,42	-
DN 40	50	97	94	132	43	1,52	-
DN 50	50	110	100	132	55	1,80	-
DN 65	50	127	109	132	72	2,18	-
DN 80	60	142	124	165	87	3,95	-
DN100	64	162	135	165	106	4,80	-
DN125	112	200	162	216	132	8,10	-
DN150	124	230	177	216	157	10,30	-



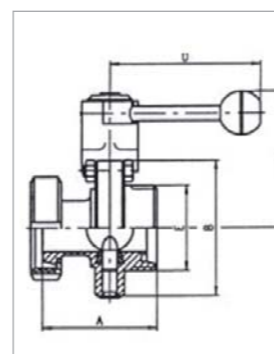
Scheibenventil DIN-GS, Art. 652 • Wst. 1.4301 poliert oder matt

652	A	B	C	D	E Rd.Gew	G(kg)	€/Stk
DN 25	52	87	89	102	52 x1/6"	1,49	-
DN 32	53	92	91	102	58 x1/6"	1,58	-
DN 40	61	97	94	132	65 x1/6"	1,78	-
DN 50	61	110	100	132	78 x1/6"	2,12	-
DN 65	63	127	109	132	95 x1/6"	2,56	-
DN 80	80	142	124	165	110 x1/4"	4,62	-
DN100	84	162	135	165	130 x1/4"	5,60	-
DN125	112	200	162	216	160 x1/4"	9,20	-
DN150	124	230	177	216	190 x1/4"	12,20	-



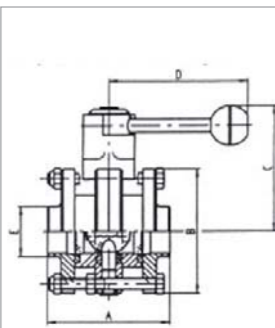
Scheibenventil DIN-GG, Art. 655 • Wst. 1.4301 poliert oder matt

655	A	B	C	D	E	G(kg)	€/Stk
DN 25	64	87	89	102	52 x1/6"	1,65	-
DN 32	64	92	91	102	58 x1/6"	1,75	-
DN 40	72	97	94	132	65 x1/6"	2,02	-
DN 50	72	110	100	132	78 x1/6"	2,40	-
DN 65	76	127	109	132	95 x1/6"	3,05	-
DN 80	100	142	124	165	110 x1/4"	5,15	-
DN100	104	162	135	165	130 x1/4"	6,50	-
DN125	112	200	162	216	160 x1/4"	10,20	-
DN150	124	230	177	216	190 x1/4"	13,90	-



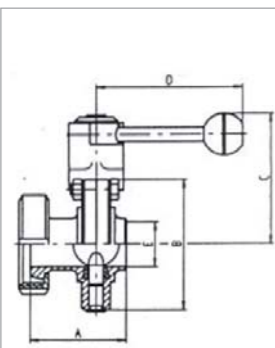
Scheibenventil DIN-GK, Art. 656 • Wst. 1.4301 poliert oder matt

656	A	B	C	D	E	G(kg)	€/Stk
DN 25	74	87	89	102	52 x1/6"	1,76	-
DN 32	78	92	91	102	58 x1/6"	1,90	-
DN 40	87	97	94	132	65 x1/6"	2,18	-
DN 50	89	110	100	132	78 x1/6"	2,65	-
DN 65	95	127	109	132	95 x1/6"	3,41	-
DN 80	117	142	124	165	110 x1/4"	5,62	-
DN100	128	162	135	165	130 x1/4"	7,10	-
DN125	146	200	162	216	160 x1/4"	11,40	-
DN150	161	230	177	216	190 x1/4"	15,60	-



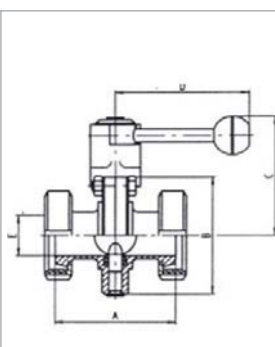
Scheibenventil DIN-Zw.FI, Art. 660 • Wst. 1.4301 poliert oder matt

660	A	B	C	D	E	G(kg)	€/Stk
DN 25	90	87	89	102	31	2,43	-
DN 32	90	92	91	102	37	2,57	-
DN 40	100	97	94	132	43	2,78	-
DN 50	100	110	100	132	55	3,35	-
DN 65	100	127	109	132	72	4,07	-
DN 80	136	142	124	165	87	7,40	-
DN100	136	162	135	165	106	8,80	-
DN125	168	200	162	216	132	15,10	-
DN150	178	230	177	216	157	18,40	-



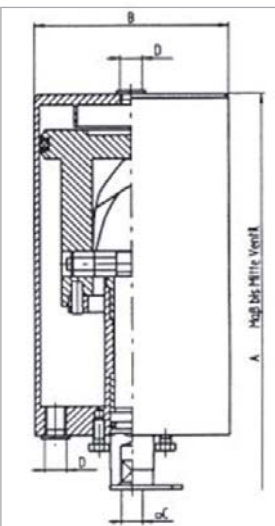
Scheibenventil DIN-KS, Art. 662 • Wst. 1.4301 poliert oder matt

662	A	B	C	D	E	G(kg)	€/Stk
DN 25	62	87	89	102	26	1,64	-
DN 32	67	92	91	102	32	1,81	-
DN 40	76	97	94	132	38	2,07	-
DN 50	78	110	100	132	50	2,67	-
DN 65	82	127	109	132	66	3,22	-
DN 80	97	142	124	165	81	5,62	-
DN100	108	162	135	165	100	7,36	-
DN125	146	200	162	216	125	10,66	-
DN150	161	230	177	216	150	13,31	-



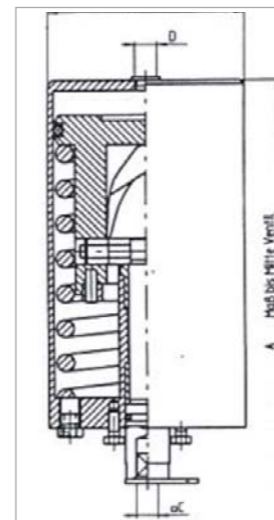
Scheibenventil DIN-KK, Art. 666 • Wst. 1.4301 poliert oder matt

666	A	B	C	D	E	G(kg)	€/Stk
DN 25	84	87	89	102	26	1,96	-
DN 32	92	92	91	102	32	2,20	-
DN 40	102	97	94	132	38	2,62	-
DN 50	106	110	100	132	50	3,54	-
DN 65	114	127	109	132	66	4,26	-
DN 80	134	142	124	165	81	7,28	-
DN100	152	162	135	165	100	9,92	-
DN125	180	200	162	216	125	11,76	-
DN150	198	230	177	216	150	15,21	-



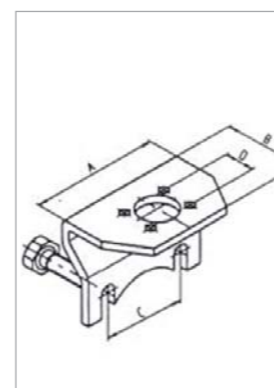
SV-Antrieb-pneumatisch-LL, Art. 677 • Wst. 1.4301

677	A	B	C	D	E	G(kg)	€/Stk
DN 25	231	90	9,5	R1/8"		2,48	-
DN 32	234	90	9,5	R1/8"		2,48	-
DN 40	236	90	9,5	R1/8"		2,48	-
DN 50	242	90	9,5	R1/8"		2,48	-
DN 65	251	90	9,5	R1/8"		2,48	-
DN 80	260	90	9,5	R1/8"		2,48	-
DN100	270	90	9,5	R1/8"		2,48	-
DN125	369	133	14	R1/8"		7,20	-
DN150	384	133	14	R1/8"		7,20	-
DN200	428	133	14	R1/8"		7,20	-
DN 75/3"	291	108	11,5	R1/8"		3,49	-
DN 80	291	108	11,5	R1/8"		3,49	-
DN100	301	108	11,5	R1/8"		3,49	-



SV-Antrieb-pneumatisch LF, Art. 678 • Wst. 1.4301

678	A	B	C	D	E	G(kg)	€/Stk
DN 25	231	90	9,5	R1/8"		3,13	-
DN 32	234	90	9,5	R1/8"		3,13	-
DN 40	236	90	9,5	R1/8"		3,13	-
DN 50	242	90	9,5	R1/8"		3,13	-
DN 65	251	90	9,5	R1/8"		3,13	-
DN 80	260	90	9,5	R1/8"		3,13	-
DN100	270	90	9,5	R1/8"		3,13	-
DN125	369	133	14	R1/8"		9,31	-
DN150	384	133	14	R1/8"		9,31	-
DN200	428	133	14	R1/8"		9,31	-
DN 75/3"	291	108	11,5	R1/8"		4,75	-
DN 80	291	108	11,5	R1/8"		4,75	-
DN100	301	108	11,5	R1/8"		4,75	-



SV-Haltekonsole, Art. 681 • Wst. 1.4301

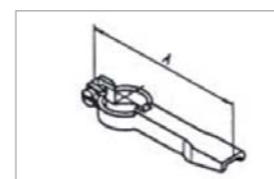
681	A	B	C	D	E	G(kg)	€/Stk
DN 25	79,5	52	51,5	17,6		0,22	-
DN 32	83	52	55	17,6		0,24	-
DN 40	86	52	58	17,6		0,24	-
DN 50	95,5	52	67,5	17,6		0,27	-
DN 65	107,5	52	79,5	17,6		0,31	-
DN 80	118	58	90	17,6		0,38	-
DN100	132	58	104	17,6		0,41	-
DN125	118	58	90	24,5		0,46	-
DN150	132	58	105	24,5		0,52	-
DN200	132	58	105	24,5		0,52	-

SV-Halteblech-mech. Endschalter, Art. 682/AZ • Wst. 1.4301, (Garnitur für „auf + zu“)

682/AZ	DN 10	DN 15	DN 20	DN 25	DN 32	DN 40	DN 50	DN 65	DN 80	DN100	DN125	DN150
EUR/Stk.	-	-	-	-	-	-	-	-	-	-	-	-

SV-Halteschutzblech Näherungsinitiator für Antrieb LL / LF, Art. 683B • Wst. 1.4301

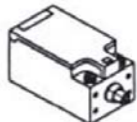
683B	DN 10	DN 15	DN 20	DN 25	DN 32	DN 40	DN 50	DN 65	DN 80	DN100	DN125	DN150
EUR/Stk.	-	-	-	-	-	-	-	-	-	-	-	-



SV-Schaltfahne, Art. 684 • Wst. 1.4301

684	A	B	C	D	E	G(kg)	€/Stk
DN 25 - 100	91					0,03	-
DN 125 - 200	117					0,04	-
DN75/3"-100	100					0,03	-

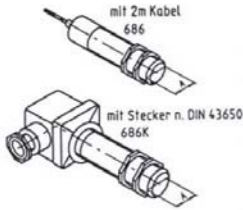


SV-Endschalter mit Schrauben, Art. 685 ●

685	A	B	C	D	E	G(kg)	€/Stk
DN 25 - 200	117					0,04	-

- Schutzart: IP 65
- Schaltglieder: 1 Öffner, 1 Schließer
- Schaltsystem: Sprungschaltung Zwangsöffnender Öffner
- Nennisolationsspannung Ui: 500V ~ 25-60HZ
- Schaltvermögen Ie: 2,5A
- Ue: 380V~
- Kurzschlusschutz: 10A (träg)

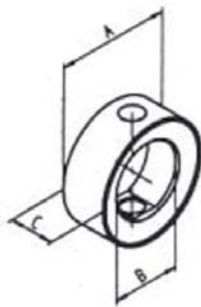


SV-Näherungsinitiator induktiv, Art. 686 ●

686	A	B	C	D	E	G(kg)	€/Stk
DN 25 - 200	M18X1					0,15	-

686K	A	B	C	D	E	G(kg)	€/Stk
DN75/3"-100	M18X1					0,15	-

- Art.-Nr.: 686 / 686K
- Schutzart: IP67 / IP65
- Speisespannung: 10-36V / 10-36V
- Ausgang: + / +
- Anschluss: PNP / PNP
- max. Schaltstrom: 200mA / 200mA



SV-Dichtung, Art. 676 ●

676	A	B	C	D	E	G(kg)
DN 25	40	26	20			0,02
DN 32	48	32	20			0,02
DN 40	55	38	21			0,02
DN 50	67	51	21			0,03
DN 65	86	68	22			0,05
DN 80	101	83	24			0,08
DN100	116	101	26			0,09
DN125	152	126	30			0,17
DN150	175	150	30			0,20
DN200	230	203	37			0,40

SV-Dichtung SILIKON, Art. 676S ●

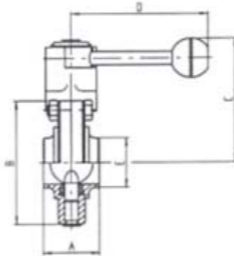
676S	DN 25	DN 32	DN 40	DN 50	DN 65	DN 80	DN100	DN125	DN150
EUR/Stk.	-	-	-	-	-	-	-	-	-

SV-Dichtung SILIKON, Art. 676E ●

676E	DN 25	DN 32	DN 40	DN 50	DN 65	DN 80	DN100	DN125	DN150
EUR/Stk.	-	-	-	-	-	-	-	-	-

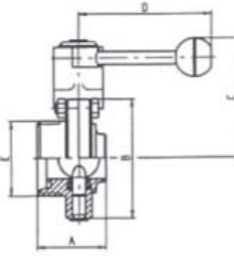
SV-Dichtung SILIKON, Art. 676V ●

676V	DN 25	DN 32	DN 40	DN 50	DN 65	DN 80	DN100	DN125	DN150
EUR/Stk.	-	-	-	-	-	-	-	-	-

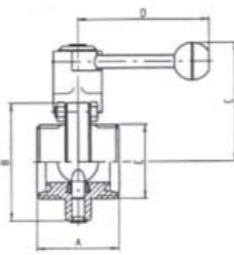
M&S Scheibenventil DIN-SS, Art. MS622 ● Wst. 1.4301 poliert "Classic"

MS622	A	B	C	D	E	G(kg)	€/Stk
DN 25	40	87	89	122	31	1,31	-
DN 32	42	92	91	122	37	1,42	-
DN 40	50	97	94	122	43	1,52	-
DN 50	50	110	100	122	55	1,80	-
DN 65	50	127	109	150	72	2,18	-
DN 80	60	142	124	150	87	3,95	-
DN100	64	162	135	150	106	4,80	-
DN125	112	200	162	216	132	8,10	-
DN150	124	230	177	216	157	10,30	-



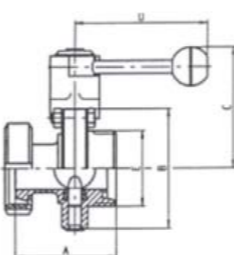
M&S Scheibenventil DIN-GS, Art. MS652 ● Wst. 1.4301 poliert "Classic"

MS652	A	B	C	D	E Rd.Gew.	G(kg)	€/Stk
DN 25	52	87	89	122	52 x1/6"	1,49	-
DN 32	53	92	91	122	58 x1/6"	1,58	-
DN 40	61	97	94	122	65 x1/6"	1,78	-
DN 50	61	110	100	122	78 x1/6"	2,12	-
DN 65	63	127	109	150	95 x1/6"	2,56	-
DN 80	80	142	124	150	110 x1/4"	4,62	-
DN100	84	162	135	150	130 x1/4"	5,60	-
DN125	112	200	162	216	160 x1/4"	9,20	-
DN150	124	230	177	216	190 x1/4"	12,20	-



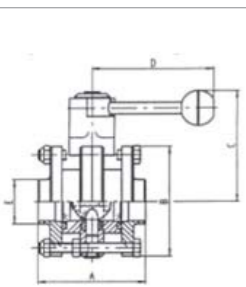
M&S Scheibenventil DIN-GG, Art. MS655 ● Wst. 1.4301 poliert "Classic"

MS655	A	B	C	D	E Rd.Gew.	G(kg)	€/Stk
DN 25	64	87	122	122	52 x1/6"	1,65	-
DN 32	64	92	122	122	58 x1/6"	1,75	-
DN 40	72	97	122	122	65 x1/6"	2,02	-
DN 50	72	110	122	122	78 x1/6"	2,40	-
DN 65	76	127	150	150	95 x1/6"	3,05	-
DN 80	100	142	150	150	110 x1/4"	5,15	-
DN100	104	162	150	150	130 x1/4"	6,50	-
DN125	112	200	216	216	160 x1/4"	10,20	-
DN150	124	230	216	216	190 x1/4"	13,90	-



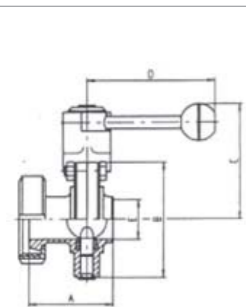
M&S Scheibenventil DIN-GK, Art. MS656 ● Wst. 1.4301 poliert "Classic"

MS656	A	B	C	D	E Rd.Gew.	G(kg)	€/Stk
DN 25	74	87	89	122	52 x1/6"	1,76	-
DN 32	78	92	91	122	58 x1/6"	1,90	-
DN 40	87	97	94	122	65 x1/6"	2,18	-
DN 50	89	110	100	122	78 x1/6"	2,65	-
DN 65	95	127	109	150	95 x1/6"	3,41	-
DN 80	117	142	124	150	110 x1/4"	5,62	-
DN100	128	162	135	150	130 x1/4"	7,10	-
DN125	146	200	162	216	160 x1/4"	11,40	-
DN150	161	230	177	216	190 x1/4"	15,60	-



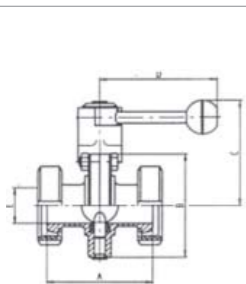
M&S Scheibenventil DIN-Zw.Fl., Art. MS660 • Wst. 1.4301 poliert „Classic“

MS660	A	B	C	D	E	G(kg)	€/Stk
DN 25	90	87	89	122	31	2,43	-
DN 32	90	92	91	122	37	2,57	-
DN 40	100	97	94	122	43	2,78	-
DN 50	100	110	100	122	55	3,35	-
DN 65	100	127	109	150	72	4,07	-
DN 80	136	142	124	150	87	7,40	-
DN100	136	162	135	150	106	8,80	-
DN125	168	200	162	216	132	15,10	-
DN150	188	230	177	216	157	18,40	-



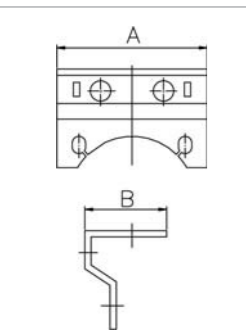
M&S Scheibenventil DIN-KS, Art. MS662 • Wst. 1.4301 poliert „Classic“

MS662	A	B	C	D	E	G(kg)	€/Stk
DN 25	62	87	89	122	26	1,64	-
DN 32	67	92	91	122	32	1,81	-
DN 40	76	97	94	122	38	2,07	-
DN 50	78	110	100	122	50	2,67	-
DN 65	82	127	109	150	66	3,22	-
DN 80	97	142	124	150	81	5,62	-
DN100	108	162	135	150	100	7,36	-
DN125	146	200	162	216	125	10,66	-
DN150	161	230	177	216	150	13,31	-



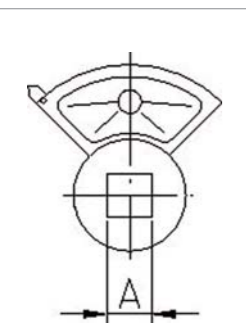
M&S Scheibenventil DIN-Zw.Fl., Art. MS666 • Wst. 1.4301 poliert „Classic“

MS666	A	B	C	D	E	G(kg)	€/Stk
DN 25	84	87	89	122	26	1,96	-
DN 32	92	92	91	122	32	2,20	-
DN 40	102	97	94	122	38	2,62	-
DN 50	106	110	100	122	50	3,54	-
DN 65	114	127	109	150	66	4,26	-
DN 80	134	142	124	150	81	7,28	-
DN100	152	162	135	150	100	9,92	-
DN125	180	200	162	216	125	11,76	-
DN150	198	230	177	216	150	15,21	-



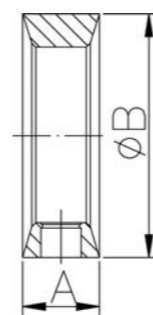
M&S SV-Kompaktkonsole, Art. MS681 • Wst. 1.4301, „Classic“, für NI M12x1

MS681	A	B	C	D	E	G(kg)	€/Stk
DN 15-25 / 1"	79,5	52				0,22	-
DN 32	83,0	52				0,23	-
DN 40 / 1,5"	86,0	52				0,23	-
DN 50 / 2"	95,5	52				0,25	-
DN 65 / 2,5"	107,5	52				0,28	-
DN 80 / 3"	118,0	52				0,36	-
DN100 / 4"	132,0	52				0,39	-
DN125	118,0	52				0,44	-
DN150	133,0	52				0,50	-



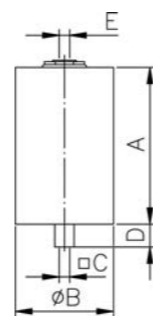
M&S SV-Schaltnocke, Art. MS684 • Polyamid/GF

MS684	A	B	C	D	E	G(kg)	€/Stk
DN 15-100	9,5					0,009	-
1" - 4"	9,5					0,009	-
DN 125-200	14					0,014	-



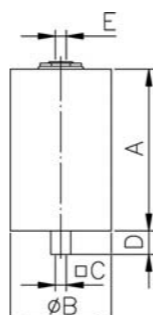
M&S SV-Dichtung, Art. MS676 • „Classic“ und „BaseCom“

MS676	A	B	G(kg)	D	E	€/Stk	€/Stk
						VMQ	EPDM
DN 25	20	40	0,02			-	-
DN 32	20	48	0,03			-	-
DN 40	21	54	0,05			-	-
DN 50	21	66	0,06			-	-
DN 65	22	84	0,07			-	-
DN 80	24	100	0,10			-	-
DN100	26	115	0,10			-	-
DN125	30	151	0,25			-	-
DN150	30	175	0,27			-	-



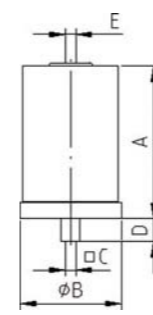
M&S SV-Antrieb-pneumatisch Luft/Luft, Art. MS677 • Wst. 1.4301, „PAMS“

MS677	A	B	C	D	E	G(kg)	€/Stk
DN 15-100	163	104	9,5	24	G 1/8"	3,40	-
1" - 4"	166	104	9,5	24	G 1/8"	3,40	-
DN 125-200	236	133	14	32	G 1/8"	8,20	-



M&S SV-Antrieb-pneumatisch Luft/Feder, Art. MS679 • Wst. 1.4301, „PAMS“

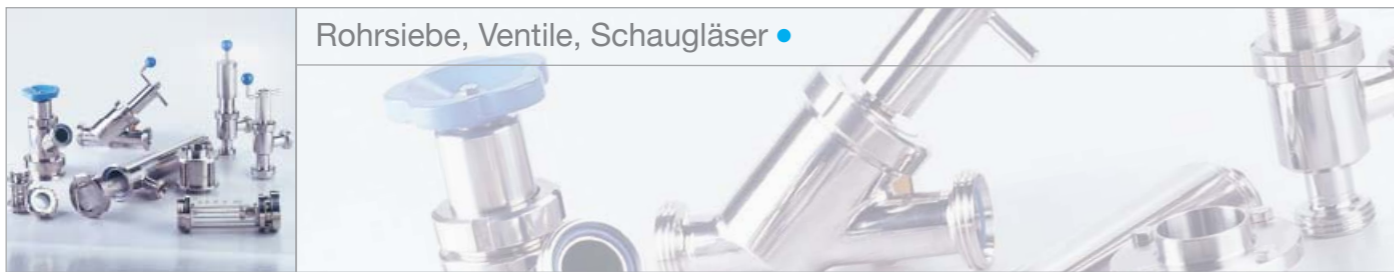
MS679	A	B	C	D	E	G(kg)	€/Stk
DN 15-100	163	104	9,5	24	G 1/8"	3,85	-
1" - 4"	163	104	9,5	24	G 1/8"	3,85	-
DN 125-150	232	133	14	32	G 1/8"	8,75	-
DN 200	232	168	22	32	G 1/8"	14,89	-



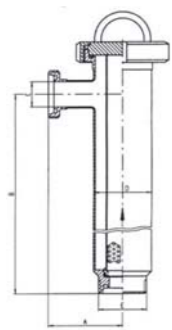
M&S SV-Antrieb-pneumatisch Luft/Feder, Art. MSPAMS08 • Kunststoffausführung, „PAMS08“

MSPAMS08	A	B	C	D	E	G(kg)	€/Stk
DN 15-100	180	109	9,5	24	G 1/8"	2,24	-
1" - 4"	180	109	9,5	24	G 1/8"	2,24	-

✓ Weitere Ausführungen auf Anfrage

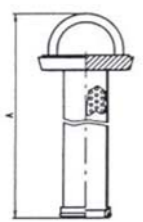


Rohrsiebe, Ventile, Schaugläser •



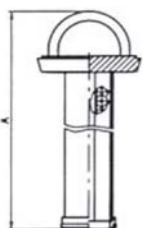
Eckrohrsieb DIN-GG, Art. 701 • Wst. 1.4301

701	A	B	C	D	E	G(kg)	€/Stk
DN 25	90	327	26	70	52 x1/6"	3,30	-
DN 32	90	327	32	70	58 x1/6"	3,40	-
DN 40	115	340	38	104	65 x1/6"	6,19	-
DN 50	115	340	50	104	78 x1/6"	6,20	-
DN 65	115	325	66	104	95 x1/6"	6,50	-
DN 80	160	560	81	129	110 x1/4"	11,80	-
DN100	160	560	100	154	130 x1/4"	16,28	-
DN125	200	560	125	180	160 x1/4"	-	-
DN150	240	620	150	206	190 x1/4"	-	-



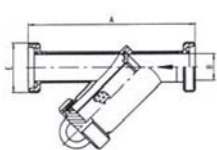
Sieb für Eckrohrsieb, Art. 701A • 1,5 mm Lochung, Wst. 1.4301

701A	A	B	C	D	E	G(kg)	€/Stk
DN 25-32	422					0,97	-
DN 40-65	479					2,31	-
DN 80	810					3,70	-
DN100	793					5,40	-
DN125	837					-	-
DN150	928					-	-



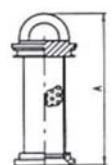
Sieb für Eckrohrsieb, Art. 701B • Gaze innen, Wst. 1.4301

701B	A	B	C	D	E	G(kg)	€/Stk
DN 25-32	422					1,17	-
DN 40-65	479					2,51	-
DN 80	810					3,92	-
DN100	793					5,62	-
DN125	837					-	-
DN150	928					-	-



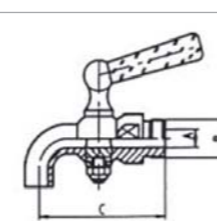
Schmutzfänger DIN-GG, Art. 703 • Wst. 1.4301

703	A	B	C	D	E	G(kg)	€/Stk
DN 25	200	26				3,70	-
DN 32	200	32				4,35	-
DN 40	210	38				5,20	-
DN 50	220	50				7,00	-
DN 65	280	66				11,90	-
DN 80	320	81				-	-
DN100	350	100				-	-



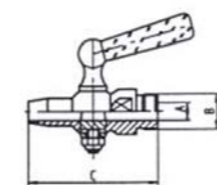
Siebeinsatz für Schmutzfänger, Art. 703A • 1,5 mm Lochung, Wst. 1.4301

703A	A	B	C	D	E	G(kg)	€/Stk
DN 25	128					0,20	-
DN 32	129					0,30	-
DN 40	141					0,40	-
DN 50	173					0,50	-
DN 65	248					0,80	-
DN 80	279					1,40	-
DN100	287					1,90	-



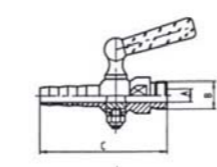
Ablasshahn, Art. 705 • Wst. 1.4571

705	A	B	C	D	E	G(kg)	€/Stk
4	4	1/4"	55			0,10	-
6	6	3/8"	65			0,16	-
8	8	1/2"	70			0,25	-
12	12	3/4"	95			0,59	-
20	20	1"	125			1,42	-



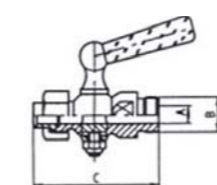
Ablasshahn, Art. 706 • Wst. 1.4571

706	A	B	C	D	E	G(kg)	€/Stk
4	4	1/4"	62			0,10	-
6	6	3/8"	66			0,16	-
8	8	1/2"	78			0,25	-
12	12	3/4"	100			0,53	-
20	20	1"	128			1,02	-



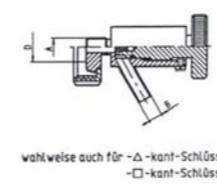
Ablasshahn, Art. 707 • Wst. 1.4571

707	A	B	C	D	E	G(kg)	€/Stk
4	4	1/4"	70			0,10	-
6	6	3/8"	82			0,16	-
8	8	1/2"	93			0,25	-
12	12	3/4"	113			0,53	-
20	20	1"	143			1,02	-



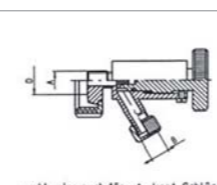
Ablasshahn, Art. 708 • Wst. 1.4571

708	A	B	C	D	E	G(kg)	€/Stk
4	4	1/4"	56			0,11	-
6	6	3/8"	68			0,20	-
8	8	1/2"	74			0,29	-
12	12	3/4"	96			0,59	-
20	20	1"	113			1,14	-



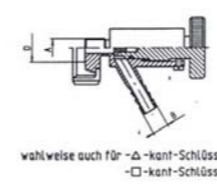
Ablasshahn, Art. 719 • Wst. 1.4571

719	A	B	C	D	E	G(kg)	€/Stk
1/4"	R1/4"	10				0,36	-
3/8"	R3/8"	10				0,38	-
1/2"	R1/2"	10				0,40	-
20		10		DN 20K/M		0,60	-



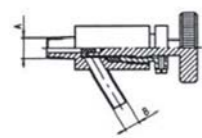
Ablasventil mit Kappe, Art. 720 • Wst. 1.4301

720	A	B	C	D	E	G(kg)	€/Stk
1/4"	R1/4"	R1/4"				0,36	-
3/8"	R3/8"	R1/4"				0,38	-
1/2"	R1/2"	R1/4"				0,40	-
20		R1/4"		DN 20K/M		0,60	-



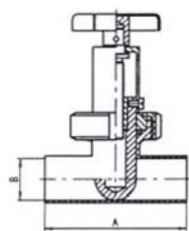
Ablasventil mit Schlauchtülle, Art. 721 • Wst. 1.4301

721	A	B	C	D	E	G(kg)	€/Stk
1/4"	R1/4"	10				0,36	-
3/8"	R3/8"	10				0,38	-
1/2"	R1/2"	10				0,40	-
20		10		DN 20K/M		0,60	-



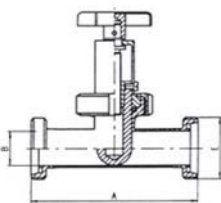
Ablassventil abflammbar, Art. 722 • Wst. 1.4301

722	A	B	C	D	E	G(kg)	€/Stk
1/2"	R1/2"	8				0,40	-



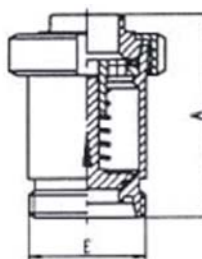
Drosselventil DIN-SS, Art. 716 • Wst. 1.4301

716	A	B	C	D	E	G(kg)	€/Stk
DN 25	100	24				0,81	-
DN 32	110	32				1,13	-
DN 40	120	38				1,75	-
DN 50	140	50				2,73	-
DN 65	161	66				3,96	-
DN 80	180	81				4,27	-
DN100	210	100				6,35	-



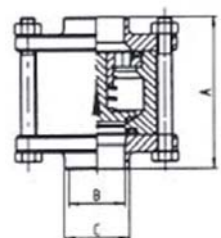
Drosselventil DIN-GG, Art. 717 • Wst. 1.4301

717	A	B	C	D	E Rd.Gew	G(kg)	€/Stk
DN 25	144	26			52 x1/6"	1,03	-
DN 32	154	32			58 x1/6"	1,39	-
DN 40	164	38			65 x1/6"	2,05	-
DN 50	186	50			78 x1/6"	3,11	-
DN 65	210	66			95 x1/6"	4,52	-
DN 80	230	81			110 x1/4"	5,11	-
DN100	270	100			130 x1/4"	7,49	-



Tellerrückschlagventil DIN-GS, Art. 770 • Wst. 1.4301

770	A	B	C	D	E Rd.Gew	G(kg)	€/Stk
DN 25	88				52 x1/6"	1,08	-
DN 32	103				58 x1/6"	1,20	-
DN 40	113				65 x1/6"	2,20	-
DN 50	114				78 x1/6"	2,55	-
DN 65	140				95 x1/6"	3,70	-
DN 80	159				110 x1/4"	5,90	-
DN100	180				130 x1/4"	9,80	-

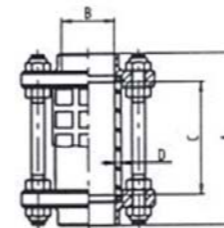


Tellerrückschlagventil DIN-Zw.FI, Art. 770N • Wst. 1.4301

770N	A	B	C	D	E	G(kg)	€/Stk
DN 25	90	26	31			1,88	-
DN 32	90	32	37			2,02	-
DN 40	100	38	43			2,09	-
DN 50	110	50	55			2,61	-
DN 65	120	66	72			3,47	-
DN 80	145	81	87			8,38	-
DN100	150	100	106			9,85	-

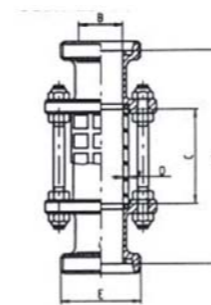


Beste Qualität -
fairer Preis



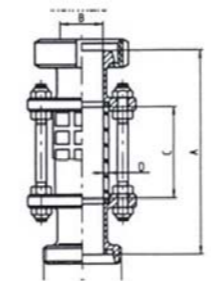
Schaulaterne DIN-SS, Art. 779 • Wst. 1.4301 poliert ohne Splitterschutz

779	A	B	C	D	E	G(kg)	€/Stk
DN 10	88	10	60	2,5		0,25	-
DN 15	88	16	60	2,5		0,30	-
DN 20	88	20	60	3		0,73	-
DN 25	98	26	70	3		0,75	-
DN 32	104	32	70	3		0,76	-
DN 40	112	38	70	5		1,08	-
DN 50	112	50	70	5		1,34	-
DN 65	127	66	85	5		1,90	-
DN 80	135	81	85	5		2,35	-
DN100	169	100	115	5		2,80	-
DN125	202	125	160	7		6,35	-
DN150	216	150	170	9		7,11	-



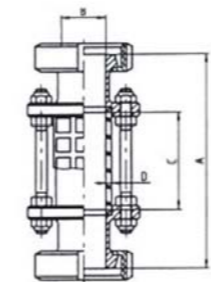
Schaulaterne DIN-GG, Art. 780 • Wst. 1.4301 poliert ohne Splitterschutz

780	A	B	C	D	E Rd.Gew	G(kg)	€/Stk
DN 10	122	10	60	2,5	28 x1/8"	0,32	-
DN 15	122	16	60	2,5	34 x1/8"	0,39	-
DN 20	124	20	60	3	44 x1/6"	0,90	-
DN 25	142	26	70	3	52 x1/6"	1,00	-
DN 32	154	32	70	3	58 x1/6"	1,08	-
DN 40	164	38	70	5	65 x1/6"	1,50	-
DN 50	168	50	70	5	78 x1/6"	1,94	-
DN 65	191	66	85	5	95 x1/6"	2,80	-
DN 80	209	81	85	5	110 x1/4"	3,10	-
DN100	257	100	115	5	130 x1/4"	4,36	-
DN125	270	125	160	7	160 x1/4"	8,80	-
DN150	290	150	170	9	190 x1/4"	10,50	-



Schaulaterne DIN-KG, Art. 781 • Wst. 1.4301 poliert, ohne Splitterschutz

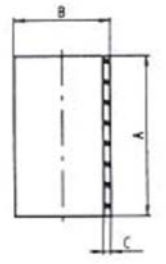
781	A	B	C	D	E Rd.Gew	G(kg)	€/Stk
DN 10	122	10	60	3	x1/8"	0,38	-
DN 15	122	16	60	3	x1/8"	0,45	-
DN 20	124	20	60	3	x1/6"	0,69	-
DN 25	142	26	70	3	x1/6"	1,02	-
DN 32	154	32	70	3	x1/6"	1,25	-
DN 40	164	38	70	5	x1/6"	1,67	-
DN 50	168	50	70	5	x1/6"	2,17	-
DN 65	191	66	85	5	x1/6"	3,26	-
DN 80	209	81	85	5	x1/4"	3,71	-
DN100	257	100	115	5	x1/4"	5,10	-
DN125	270	125	160	7	x1/4"	9,50	-
DN150	290	150	170	9	x1/4"	11,30	-



Schaulaterne DIN-KK, Art. 782 • Wst. 1.4301 poliert, ohne Splitterschutz

782	A	B	C	D	E	G(kg)	€/Stk
DN 10	122	10	60	3		0,44	-
DN 15	122	16	60	3		0,52	-
DN 20	124	20	60	3		1,08	-
DN 25	142	26	70	3		1,20	-
DN 32	154	32	70	3		1,41	-
DN 40	164	38	70	5		1,89	-
DN 50	168	50	70	5		2,50	-
DN 65	191	66	85	5		3,64	-
DN 80	209	81	85	5		4,27	-
DN100	257	100	115	5		6,13	-
DN125	270	125	160	7		10,20	-
DN150	290	150	170	9		11,79	-



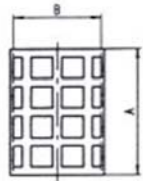
Glaszylinder für Schaulaterne, Art. 783 • Borosilikat		783	A	B	C	D	E	G(kg)	€/Stk
	DN 10	60	15	2,5				0,02	-
	DN 15	60	22	2,5				0,02	-
	DN 20	60	26	3				0,03	-
	DN 25	70	32	3				0,04	-
	DN 32	70	40	3				0,06	-
	DN 40	70	50	5				0,11	-
	DN 50	70	60	5				0,14	-
	DN 65	85	75	5				0,21	-
	DN 80	85	90	5				0,30	-
	DN100	115	110	5				0,43	-
	DN125	160	140	7				1,12	-
	DN150	170	170	9				1,80	-

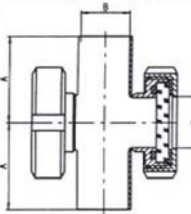
Dichtung für Schaulaterne, Art. 784P • PERBUNAN

784P	DN 10	DN 15	DN 20	DN 25	DN 32	DN 40	DN 50	DN 65	DN 80	DN100	DN125	DN150
EUR/Stk.	-	-	-	-	-	-	-	-	-	-	-	-

Dichtung für Schaulaterne, Art. 784E • EPDM

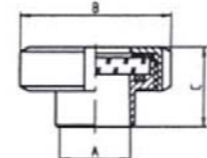
784E	DN 10	DN 15	DN 20	DN 25	DN 32	DN 40	DN 50	DN 65	DN 80	DN100	DN125	DN150
EUR/Stk.	-	-	-	-	-	-	-	-	-	-	-	-

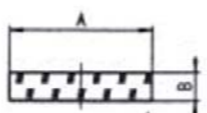
Splitterschutz für Schaulaterne, Art. 785 • Wst. 1.4301		785	A	B	C	D	E	G(kg)	€/Stk
	DN 10	46	18,5					0,01	-
	DN 15	46	24,5					0,01	-
	DN 20	46	28,5					0,01	-
	DN 25	60	33,5					0,01	-
	DN 32	60	41,0					0,02	-
	DN 40	60	51,5					0,02	-
	DN 50	60	62,5					0,03	-
	DN 65	74	77,5					0,04	-
	DN 80	74	93,5					0,04	-
	DN100	102	112,5					0,07	-
	DN125	14	143,0					0,12	-
	DN150	158	173,0					0,17	-

Schauglasarmatur DIN-SS, Art. 786 • Wst. 1.4301		786	A	B	C	D	E	G(kg)	€/Stk
	DN 25	50	25	26				0,85	-
	DN 32	55	31	32				0,90	-
	DN 40	60	37	38				1,10	-
	DN 50	70	49	50				1,50	-
	DN 65/50	80	66	50				1,80	-
	DN 80/65	90	81	66				2,80	-
	DN 100/65	100	100	66				3,00	-
	DN 125/100	187	125	100				-	-
	DN 150/100	225	150	100				-	-

 Großes
Lagersortiment!



Schauglas DIN-Anschweiß, Art. 787 • Wst. 1.4301		787	A	B	C	D	E	G(kg)	€/Stk
	DN 25	27	63	37				0,31	-
	DN 32	33	70	40				0,40	-
	DN 40	39	78	41				0,48	-
	DN 50	51	92	43				0,69	-
	DN 65	67	112	48				1,10	-
	DN 80	82	127	58				1,61	-
	DN100	102	148	63				2,27	-
	DN125	128	178	58				3,08	-
	DN150	152	210	63				5,28	-

Schauglasplatte-Hartglas, Art. 788 •		788	A	B	C	D	E	G(kg)	€/Stk
	DN 25	45	10					0,03	-
	DN 32	50	10					0,04	-
	DN 40	55	10					0,06	-
	DN 50	65	10					0,08	-
	DN 65	85	10					0,14	-
	DN 80	100	15					0,29	-
	DN100	118	12					0,33	-
	DN125	150	15					0,66	-
	DN150	175	20					1,18	-

 Auf
Anfrage

		TYPE			€/Stk
Standanzeige-Oberteil	Art. 790G	Wst. 1.4301	Rohr 15 mm	1/2"	-
Standanzeige-Oberteil	Art. 790P	Wst. 1.4301	Rohr 13 mm	1/2"	-
Standanzeige-Mittelstück	Art. 791G	Wst. 1.4301	Rohr 15 mm	1/2"	-
Standanzeige-Mittelstück	Art. 791P	Wst. 1.4301	Rohr 13 mm	1/2"	-
Standanzeigeventil	Art. 792G	Wst. 1.4301	Rohr 15 mm	1/2"	-
Standanzeigeventil	Art. 792P	Wst. 1.4301	Rohr 13 mm	1/2"	-

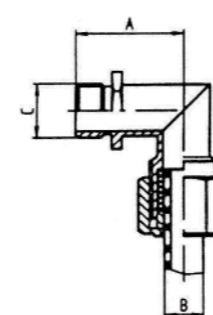


Abb. zu Art. 790

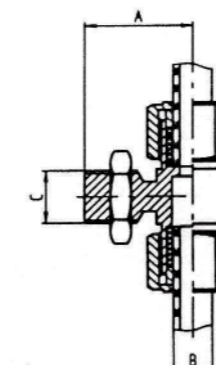


Abb. zu Art. 791

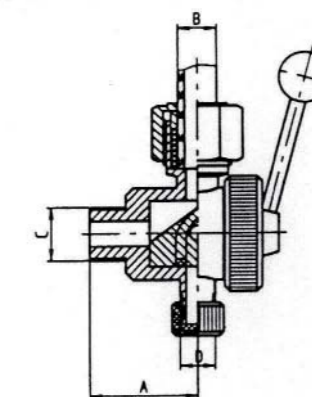


Abb. zu Art. 792



Tankausrüstung •

Sprühkugel-A, Art. 870 • Wst. 1.4301 Spritzkreis 1

870M	TYP	A	D	Spritzkr. Ø m	Durchs. m³/h	Spritzdr. bar	€/Stk
8	8A1	R1"	28	0,0 - 2,0	4	2,5	-
25	25A1	R1"	65	2,0 - 2,5	17	2,5	-
25	25A2	R1"	65	2,5 - 3,5	23	2,5	-
25	25A3	R1"	65	3,0 - 4,0	26	2,5	-
50	50A1	R2"	93	0,0 - 4,5	55	3,5	-
50	50A2	R2"	93	4,0 - 6,0	58	3,5	-
50	50A3	R2"	93	6,0 - 8,0	70	3,5	-
870S	TYP	A	D	Spritzkr. Ø m	Durchs. m³/h	Spritzdr. bar	€/Stk
25	25A1	29	65	2,0 - 2,5	17	2,5	-
25	25A2	29	65	2,5 - 3,5	23	2,5	-
25	25A3	29	65	3,0 - 4,0	26	2,5	-
50	50A1	53	93	0,0 - 4,5	55	3,5	-
50	50A2	53	93	4,0 - 6,0	58	3,5	-
50	50A3	53	93	6,0 - 8,0	70	3,5	-

Sprühkugel-B, Art. 871 • Wst. 1.4301 Spritzkreis 1

871M	TYP	A	D	Spritzkr. Ø m	Durchs. m³/h	Spritzdr. bar	€/Stk
25	25B1	R1"	65	2,0 - 2,5	10	2,5	-
25	25B2	R1"	65	2,5 - 3,5	17	2,5	-
25	25B3	R1"	65	3,0 - 4,0	22	2,5	-
50	50B1	R2"	93	0,0 - 4,5	38	3,5	-
50	50B2	R2"	93	4,0 - 6,0	41	3,5	-
50	50B3	R2"	93	6,0 - 8,0	50	3,5	-
871S	TYP	A	D	Spritzkr. Ø m	Durchs. m³/h	Spritzdr. bar	€/Stk
25	25B1	29	65	2,0 - 2,5	10	2,5	-
25	25B2	29	65	2,5 - 3,5	17	2,5	-
25	25B3	29	65	3,0 - 4,0	22	2,5	-
50	50B1	53	93	0,0 - 4,5	38	3,5	-
50	50B2	53	93	4,0 - 6,0	41	3,5	-
50	50B3	53	93	6,0 - 8,0	50	3,5	-

Sprühkugel-C, Art. 872 • Wst. 1.4301 Spritzkreis 1

872M	TYP	A	D	Spritzkr. Ø m	Durchs. m³/h	Spritzdr. bar	€/Stk
25	25C1	R1"	65	2,0 - 2,5	10	2,5	-
25	25C2	R1"	65	2,5 - 3,5	15	2,5	-
25	25C3	R1"	65	3,0 - 4,0	21	2,5	-
50	50C1	R2"	93	0,0 - 4,5	30	3,5	-
50	50C2	R2"	93	4,0 - 6,0	35	3,5	-
50	50C3	R2"	93	6,0 - 8,0	41	3,5	-
872S	TYP	A	D	Spritzkr. Ø m	Durchs. m³/h	Spritzdr. bar	€/Stk
25	25C1	29	65	2,0 - 2,5	10	2,5	-
25	25C2	29	65	2,5 - 3,5	15	2,5	-
25	25C3	29	65	3,0 - 4,0	21	2,5	-
50	50C1	53	93	0,0 - 4,5	30	3,5	-
50	50C2	53	93	4,0 - 6,0	35	3,5	-
50	50C3	53	93	6,0 - 8,0	41	3,5	-

Sprühkugel-D, Art. 873 • Wst. 1.4301 Spritzkreis 1

873M	TYP	A	D	Spritzkr. Ø m	Durchs. m³/h	Spritzdr. bar	€/Stk
25	25D1	R1"	65	2,0 - 2,5	15	2,5	-
25	25D2	R1"	65	2,5 - 3,5	18	2,5	-
25	25D3	R1"	65	3,0 - 4,0	22	2,5	-
50	50D1	R2"	93	0,0 - 4,5	45	3,5	-
50	50D2	R2"	93	4,0 - 6,0	46	3,5	-
50	50D3	R2"	93	6,0 - 8,0	51	3,5	-
873S	TYP	A	D	Spritzkr. Ø m	Durchs. m³/h	Spritzdr. bar	€/Stk
25	25D1	29	65	2,0 - 2,5	15	2,5	-
25	25D2	29	65	2,5 - 3,5	18	2,5	-
25	25D3	29	65	3,0 - 4,0	22	2,5	-
50	50D1	53	93	0,0 - 4,5	45	3,5	-
50	50D2	53	93	4,0 - 6,0	46	3,5	-
50	50D3	53	93	6,0 - 8,0	51	3,5	-

Sprühkugel-E, Art. 874 • Wst. 1.4301

874M	TYP	A	D	Spritzkr. Ø m	Durchs. m³/h	Spritzdr. bar	€/Stk
25	25E1	R1"	65	2,0 - 2,5	8	2,5	-
25	25E2	R1"	65	2,5 - 3,5	14	2,5	-
25	25E3	R1"	65	3,0 - 4,0	17	2,5	-
874S	TYP	A	D	Spritzkr. Ø m	Durchs. m³/h	Spritzdr. bar	€/Stk
25	25E1	29	65	2,0 - 2,5	12	2,5	-
25	25E2	29	65	2,5 - 3,5	15	2,5	-
25	25E3	29	65	3,0 - 4,0	17	2,5	-

Sprühkugel-F, Art. 875 • Wst. 1.4301

875M	TYP	A	D	Spritzkr. Ø m	Durchs. m³/h	Spritzdr. bar	€/Stk
25	25F1	R1"	65	2,0 - 2,5	7	2,5	-
25	25F2	R1"	65	2,5 - 3,5	12	2,5	-
25	25F3	R1"	65	3,0 - 4,0	16	2,5	-
875S	TYP	A	D	Spritzkr. Ø m	Durchs. m³/h	Spritzdr. bar	€/Stk
25	25F1	29	65	2,0 - 2,5	7	2,5	-
25	25F2	29	65	2,5 - 3,5	12	2,5	-
25	25F3	29	65	3,0 - 4,0	16	2,5	-

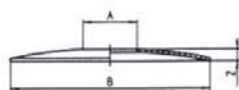




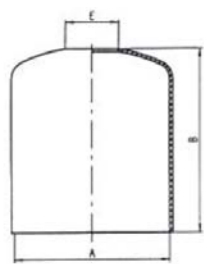
Montagezubehör / Werkzeug



Rosette-DIN, Art. 901 • Wst. 1.4301

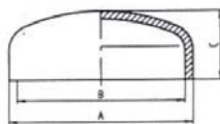


901	A	B	C	D	E	G(kg)	€/Stk
DN 25	28,5	125	8			0,18	-
DN 32	34,5	125	8			0,12	-
DN 40	40,5	125	8			0,17	-
DN 50	52,5	125	6			0,11	-
DN 65	70,5	125	6			0,13	-
DN 80	85,5	180	10			0,15	-
DN100	104,5	180	10			0,27	-



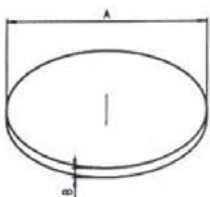
Glocke DIN-Anschweiß, Art. 902 • Wst. 1.4301

902	A	B	C	D	E	G(kg)	€/Stk
DN 25	81	140			28,2	0,64	-
DN 32	100	140			34,2	0,66	-
DN 40	100	140			40,2	0,65	-
DN 50	125	140			52,2	0,63	-
DN 65	125	140			70,3	0,81	-
DN 80	125	160			85,3	1,14	-
DN100	150	200			104,3	2,12	-



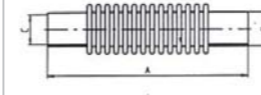
Gewölbter Boden DIN, Art. 904 • EPDM

904	A	B	C	D	E	G(kg)	€/Stk
DN 25	28	25	11,5			0,01	-
DN 32	34	31	13			0,02	-
DN 40	40	37	14			0,02	-
DN 50	52	49	17			0,03	-
DN 65	70	66	21,5			0,08	-
DN 80	85	81	24,5			0,12	-
DN100	104	100	28,5			0,20	-
DN125	129	125	33			0,28	-
DN150	154	150	38			0,65	-
DN200	204	200	48			1,16	-
DN250	254	200					-



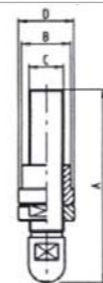
Ronde-Blech, Art. 906 • Wst. 1.4301

906	A	B	C	D	E	G(kg)	€/Stk
	28	x 1,5				0,01	-
	34	x 1,5				0,01	-
	40	x 1,5				0,02	-
	52	x 1,5				0,03	-
	70	x 1,5				0,05	-
	88	x 1,5				0,07	-
	110	x 1,5				0,11	-
	128	x 2				0,20	-
	150	x 2				0,28	-
	165	x 3				0,51	-
	210	x 3				0,82	-
	250	x 3				1,16	-



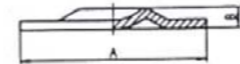
Kompensator ND 10, Art. 929 • Wst. 1.4301

929	A	B	C	Dehnungsaufnahme	E	G(kg)
DN 25	200	28	25	+ 10	0,16	-
DN 32	200	34	31	+ 15	0,18	-
DN 40	200	40	37	+ 15	0,26	-
DN 50	200	52	49	+ 15	0,32	-
DN 65	200	70	66	+ 18	0,56	-
DN 80	200	85	81	+ 20	0,78	-
DN100	300	104	100	+ 35	0,95	-



Kalottenfuß komplett, Art. 930 • Wst. 1.4301, ohne Teller

930	A	B	C	D	E	G(kg)	€/Stk
3/8"	100	23,7	R3/8"	26,9		0,78	-
1/2"	120	29,7	R1/2"	33,7		1,01	-
1"	150	44,3	R1"	48,3		1,54	-
1 1/2"	150	56,3	R1 1/2"	60,3		2,86	-



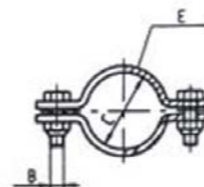
Kalotten-Teller, Art. 930T • Wst. 1.4301

930T	A	B	C	D	E	G(kg)	€/Stk
3/8" - 1 1/2"	102	13				0,33	7,10



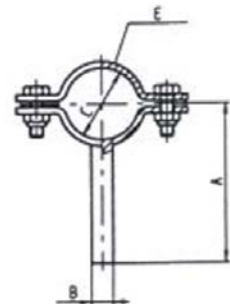
Rohrträgergabel-DIN, Art. 933 • Wst. 1.4301

933	A	B	C	D	E	G(kg)	€/Stk
DN 10	62	6	6			0,01	-
DN 15	65	6	9			0,02	-
DN 20	67	6	11			0,03	-
DN 25	72	8	14			0,04	-
DN 32	75	8	17			0,05	-
DN 40	78	8	20			0,06	-
DN 50	84	8	26			0,06	-
DN 65	93	8	35			0,07	-
DN 80	104,5	12	42,5			0,19	-
DN100	114	12	52			0,24	-
DN125	140	14	64,5			0,37	-
DN150	180	14	77			1,45	-



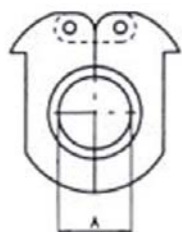
Rohrschelle-DIN, Art. 934 • Wst. 1.4301

934	A	B	C	D	E	G(kg)	€/Stk
DN 10		M 6	12		20x3	0,02	-
DN 15		M 6	18		20x3	0,04	-
DN 20		M 6	22		20x3	0,05	-
DN 25		M 6	28		20x3	0,05	-
DN 32		M 6	34		20x3	0,07	-
DN 40		M 6	40		20x3	0,07	-
DN 50		M 6	52		20x3	0,08	-
DN 65		M 6	70		20x3	0,09	-
DN 80		M 6	85		25x3	0,15	-
DN100		M 6	104		25x3	0,23	-
DN125		M 8	129		30x4	0,41	-
DN150		M 8	154		40x5	0,96	-
DN200		M 10	204		50x5	1,20	-
DN250		M 16	254		60x6		-



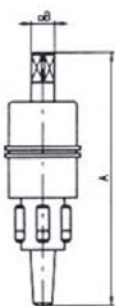
Rohrschelle-DIN, Art. 935 • Wst. 1.4301, mit Schaft

935	A	B	C	D	E	G(kg)	€/Stk
DN 10	64	8	12		20x3	0,04	-
DN 15	67	8	18		20x3	0,07	-
DN 20	69	8	22		20x3	0,08	-
DN 25	72	10	28		20x3	0,10	-
DN 32	75	10	34		20x3	0,11	-
DN 40	78	10	40		20x3	0,12	-
DN 50	84	12	52		20x3	0,13	-
DN 65	93	12	70		20x3	0,16	-
DN 80	100,5	12	85		25x3	0,27	-
DN100	110	12	104		25x3	0,32	-
DN125	140	16	129		30x4	0,48	-
DN150	180	16	154		40x5	1,04	-
DN200	240	20	204		50x5	1,30	-
DN250		22	254		60x6		-



Einwalzvorrichtung, Art. 948 •

948	A	B	C	D	E	G(kg)	€/Stk
DN 25	28					1,50	-
DN 32	34					1,35	-
DN 40	40					1,60	-
DN 50	52					2,00	-
DN 65	70					2,50	-
DN 80	85					2,80	-
DN100	104					3,70	-



Rohrwalze, Art. 949 •

949	A	B	C	D	E	G(kg)	€/Stk
DN 10	118	8				0,35	-
DN 15	129	8				0,37	-
DN 20	140	8				0,38	-
DN 25	159	12				0,70	-
DN 32	171	12				1,05	-
DN 40	176	14				1,54	-
DN 50	180	14				2,37	-
DN 65	205	16				4,15	-
DN 80	238	22				7,90	-
DN100	240	22				10,50	-



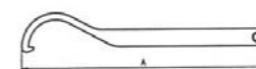
Knarre, Art. 950 •

950	A	B	C	D	E	G(kg)	€/Stk
DN 10-20		8				0,09	-
DN 25-32		12				0,29	-
DN 40-50		14				0,27	-
DN 65		16				0,42	-
DN 80-100		22				0,63	-



Rohrsägewerkzeug, Art. 951 •

951	A	B	C	D	E	G(kg)	€/Stk
DN 10		12				0,61	-
DN 15		18				0,62	-
DN 20		22				0,63	-
DN 25		28				0,65	-
DN 32		34				0,67	-
DN 40		40				0,87	-
DN 50		52				1,00	-
DN 65		70				1,96	-
DN 80		85				2,43	-
DN100		104				2,44	-



Hakenschlüssel, Art. 952 • Wst. 1.4301

952	A	B	C	D	E	G(kg)	€/Stk
DN 25-50	300					0,41	-
DN 65-100	400					0,46	-
DN 125	575					3,53	-
DN 150	610					4,50	-



Hakenschlüssel mit Gelenk, Art. 953 • Stahl-vernickelt

953	A	B	C	D	E	G(kg)	€/Stk
DN 10-20						0,09	-
DN 25-40						0,29	-
DN 50-100						0,44	-
DN 125-150						0,58	-



Senden Sie uns Ihre Anfrage oder
Bestellung gerne auch per Mail:
office@sonnleitnergmbh.at

